



GENUINE
B-2
PARTS

QUBICA  **AMF**

**REPLACEMENT PARTS FOR BRUNSWICK
A / A-2 STYLE PINSETTERS**



**THERE'S MORE
THAN ONE WAY TO SAY
"PREMIUM B-2 PARTS".
FOR EXAMPLE, WE ALSO SAY
"100% MONEY-BACK
GUARANTEE,
NO QUESTIONS ASKED".**

You can be completely confident about buying replacement parts for Brunswick A/A-2 style machines from QubicaAMF. Just consider the following:

- We service the largest chain of bowling centers in the world – Our biggest customer - AMF Bowling Centers - is the largest user of replacement parts for Brunswick A/A-2 style machines in the world, operating over 8,000 lanes. These centers demand high quality, speedy delivery, and a good price - and get all three.
- We provide the best value for the money – Our B-2 parts meet or exceed their OEM specs. Many have the original made-in-the-USA design. Rigorous quality control and inspections plus “real world” testing give you added assurance.
- We stand behind our B-2 parts with the highest guarantee – And our 100% money-back, no-questions-asked guarantee proves it.

* Brunswick is a registered trademark of the Brunswick Bowling & Billiard Corporation and is in no way affiliated with QubicaAMF Worldwide, Inc.



TABLE OF CONTENTS

B-2 PARTS

Ball Lift Assembly	6
Ball Return Assembly	7-8
Cross Conveyor Assembly	8
Cushion Assembly	9-10
Deck Assembly	11-13
Elevator Assembly	13-17
Gear Box Assembly	17-22
Pit Conveyor Assembly	23-25
Rake Assembly	26-27
Turret Assembly	28-31
Electrical Components	31-32
Tools	33
Belts	34

HARDWARE

Hex Head Cap Screws	38-44
Socket Head Cap Screws	45-46
Flat Head Socket Cap Screws	47-48
Button head Socket Cap Screws	49
Hex Nuts	49-51
Retaining Rings	52
Lock Washers	53
Flat Washers	54-55
Roll Pins	56
Spirol Pins	57
X-Washers	57
X-Washer Pins	58-59
Machine Keys	59
Steel Spacers & Bushings	60-61
Sleeve Oilite Bearings	62
Flanged Oilite Bearings	63
Ball Bearings	64-68
Tension Springs	69-70
Compression Springs	71





**GENUINE
B-2
PARTS**

QUBICA  AMF

B - 2 PARTS

1



BALL LIFT ASSEMBLY

POWER LIFT TIRES



Power Lift Tire
Product Code B53520060000 EA
V-Wheel Profile Blue Urethane
Product Code 250001163 EA
Urethane Foam Ball Lift Tire
Product Code B90520060600 EA

BALL LIFT MOTOR



Product Code 250001161 EA

POWER LIFT DRIVE SHAFT



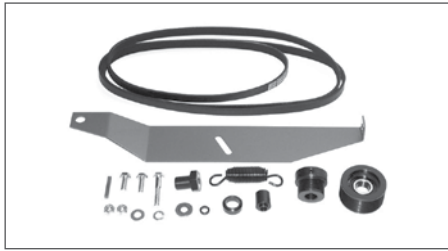
An exact replacement that will not wear or break.
Product Code B53520066000 EA

IDLER PULLEY MOUNTING STUD



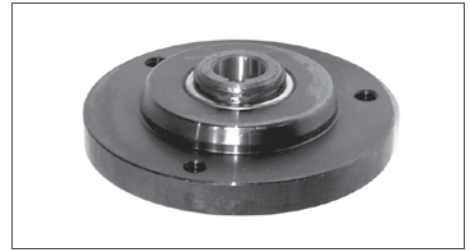
Product Code B53520071000 EA

POLY V CONVERSION KIT



This kit includes everything needed to convert the old flat belt drive to the much more efficient Poly "V" belt.
Product Code B53860431000 EA

STANDARD POWER LIFT CLUTCH



Product Code B53860555000 EA

URETHANE BALL LIFT TRACK



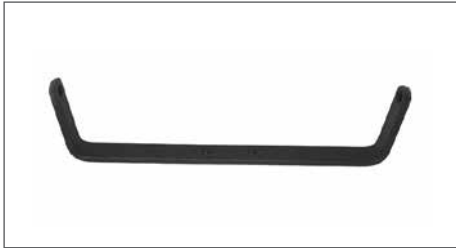
Our long lasting urethane track replaces the older rubber and leather liners.
Product Code B90520171000 EA

Y TRACK ASSEMBLY



Heavy-duty steel eliminates breakage around the mounting holes for the Y switch plate.
Product Code B1250210000 EA

Y SWITCH STOP BAR



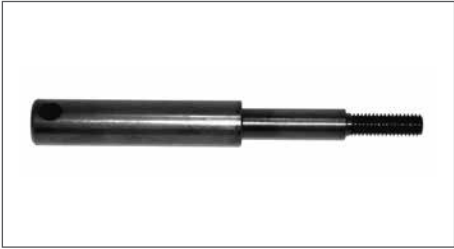
Product Code B12502131000 EA

BUMPER



Product Code B12502154000 EA

Y SWITCH SHAFT



Product Code B12502134000 EA

ACCELERATOR PULLEY SHAFT



Product Code B12502353000 EA

BALL JOINT ASSEMBLY



Product Code B10690001000 EA

SPACER



Product Code B11387264002 EA

HIGH CROWN ACC. PULLEY ASY & ACCELERATOR PULLEY ASSEMBLY



High Crown Acc. Pulley Asy
Product Code B12502349600 EA
 Accelerator Pulley Assembly
Product Code B12502349600 EA

SHORT TRACK BRACE & LONG BRACE



Short Track Brace
Product Code B12502139000 EA
 Long Brace
 This welded steel tubing helps support the ball return track.
Product Code B12502140000 EA

Y SWITCH ASSEMBLY



Product Code B90502153000

ACCELERATOR PULLEY SUPPORT



Product Code B12502303000 EA

ACCELERATOR MOTOR PULLEY 1/2" BORE



Accelerator motor pulley 1/2" bore with 1 11/16" diameter
Product Code B12502475000 EA
 Accelerator motor pulley 1/2" bore with 1 1/2" diameter
Product Code B12502474000 EA

BALL RETURN ASSEMBLY - CONTINUED

BALL WIPE



Ball Wipe Complete

Product Code B12252377000

Ball Wipe Sleeve

Product Code B12252377002

Pad

Product Code B12252377003

CROSS CONVEYOR ASSEMBLY

CROSS CONVEYOR PULLEY



Machined steel idlers with replaceable ball bearings. Last longer than the traditional sheet metal idler pulleys.

Product Code B12450034000 EA

NYLON ROLLER



Product Code B12450064000 EA

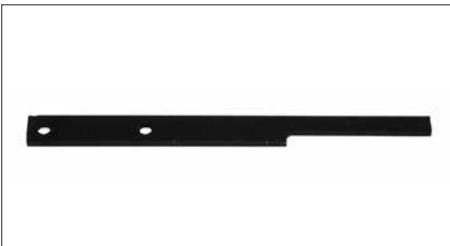
SNUBBER



Polished and hard plated allows for a smooth transfer of pins.

Product Code B12450075000 EA

STRAP



Strap

Product Code B12150057003 EA

Nylon Strap

Product Code B121556 EA

LATCH ASSEMBLY



The solid cast iron latch comes with hardened shoulder bolt and oilite bearings.

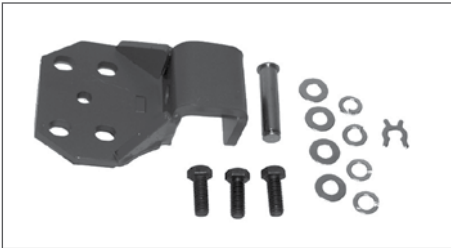
Product Code B12450032000 EA

SHOULDER BOLT (PKG OF 2)



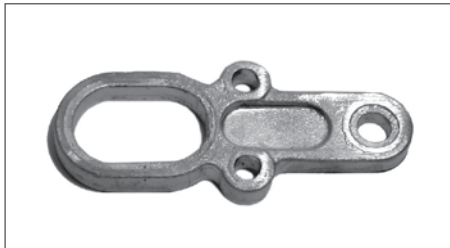
Product Code B12252016000BG BG

CUSHION BRACKET



Product Code **B12252344000** EA

FOLLOWER LINK



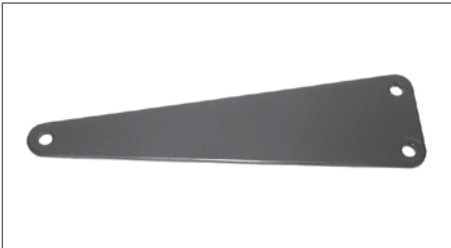
Product Code **B12252346000** EA

CUSHION ARM BOLT (BAG OF 2)



Product Code **B12252352000BG** BG

LINK PLATE



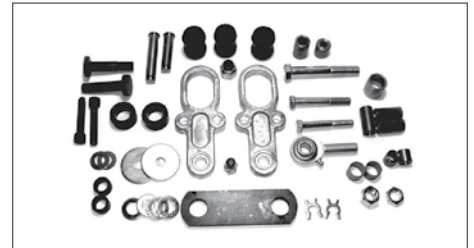
Product Code **B12252359000** EA

CUSHION LIFT TUBE



Product Code **B12252364002**

BIG KIT CUSHION ARM



Lots of "play" in your cushion? Is the ball not cycling the pinsetter? This kit includes all the replacement parts you need to rebuild one pit cushion arm.

Product Code **B12862580000** EA

PIT CUSHION



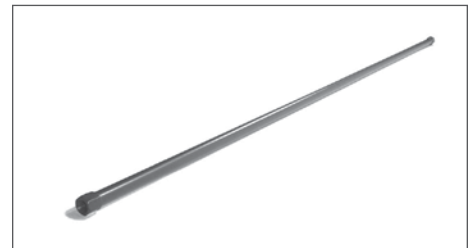
Product Code **B12862578000** EA

CUSHION MOUNT



Product Code **B12862839000**

TUBE



Product Code **B12252364003**

ROD END (BAG OF 10)



Product Code **B12250153000BG** BG

RUBBER BUSHING (10 PER BAG)



Product Code **B12250189000BG** BG

LINK



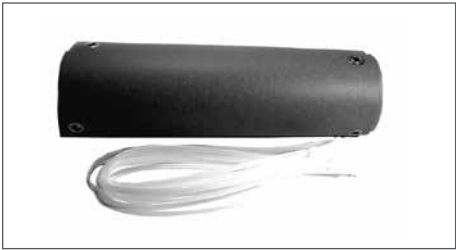
Product Code **B12252069000** EA

3/8-24 X2-3/4 SCR HC BAG/10



Product Code **B10002001000BG** BG

CUSHION COVER



Product Code **B12252304000** **EA**

ROD BRACKET



LH rod bracket
Product Code **B12252269000** **EA**
 RH rod bracket
Product Code **B12252268000** **EA**

SHOCK



Product Code **B12252173000** **EA**

RUBBER PIT CURTAIN



Product Code **B12862167000** **EA**

ROLLER (BAG OF 10)



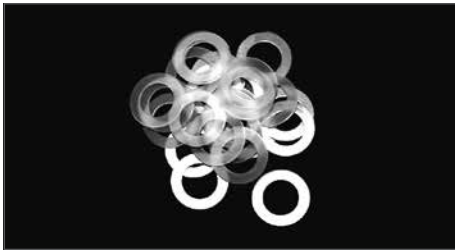
Product Code **B12252351000BG** **BG**

PIT CUSHION CAM & ROLLER KIT



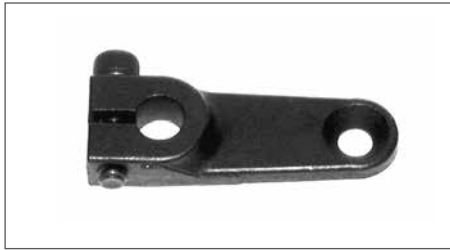
Product Code **PPP-PC1K** **EA**
 No maintenance - replacement part
Product Code **PPP-RRA-NM** **EA**
 Steel Hub & Sleeve
Product Code **PPP-RRA** **EA**

NYLON WASHER (BAG OF 25)



Product Code **B12200031004BG** **BG**

DRAG LINK



Product Code **B12200039000** **EA**

GENEVA PLATE



LH Geneva Plate
Product Code **B12200035000** **EA**
RH Geneva Plate
Product Code **B12200036000** **EA**

SPOTTING FINGER



Spotting finger LH
Product Code **B12200893000** **EA**
Spotting finger RH
Product Code **B12200892000** **EA**

DECK ROLLER



Made of neoprene rubber, the roller comes complete with the hub and bearing and is oil resistant.
Product Code **B90200114000** **EA**

DECK PAD



Urethane Foam Deck Pad (Box 10)
Product Code **B12860571000BX** **BX**
Deck Pad (hot shot style) (Box of 10)
Product Code **B12200874000BX** **BX**

STABILIZER ASSEMBLY



Original design comes complete with both rod ends.
Product Code **B12350122000** **EA**
Rod end RH
Product Code **B12350122003** **EA**
Rod end LH
Product Code **B12350122004** **EA**
Stabilized Rod Only
Product Code **B12350122002** **EA**

ARM ASSEMBLY



Scissor Arm Assembly
Product Code **B12200016091** **EA**
Arm Assembly Long With Pad
Product Code **B12200016000** **EA**
Scissor Arm Assembly Long Without Pad
Product Code **B12200017092** **EA**
Scissor Arm Assembly Short Without Pad
Product Code **B12200019092** **EA**
Scissor Arm Short With Pad
Product Code **B12200018000** **EA**
Gripper Pad
Slip-on style, oil resistant rubber and ribbed for better pin placement.
Product Code **B12200120004** **EA**

DECK CHUTE



Rubber Deck Chute #7&10
Product Code **B12200808003** **EA**
Urethane Deck Chute #7&10
Product Code **B90200808003** **EA**
Urethane Deck Chute #5
Product Code **B90200837000** **EA**
Rubber Deck Chute Multi
Product Code **B12200900000** **EA**
Urethane Deck Chute Multi
Product Code **B90200900000** **EA**
Rubber Deck Chute #1
Product Code **B12200808002** **EA**
Urethane Deck Chute #1
Product Code **B90200808002** **EA**

DECK HOOK



Deck Hook & Hub Assembly

Product Code B12350802000 EA

Deck Hook

Product Code B12350803000 EA

Deck Hook Hub

Product Code B12350804000 EA

DECK POST PIN



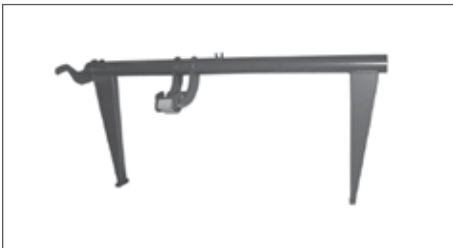
Product Code B12200129000 EA

MOVING DECK WHEEL ASSEMBLY



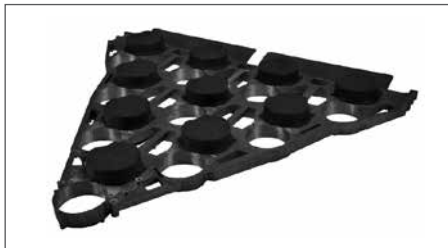
Product Code B12200126000 EA

DECK LIFT SHAFT



Product Code B12862581000 EA

USED MOVING DECK



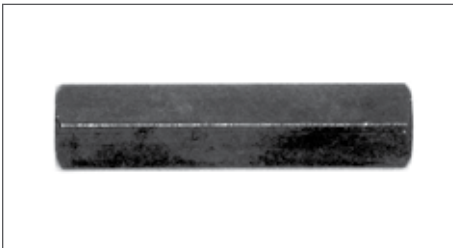
Product Code B12862117-R EA
Limited Availability

DECK JAM SWITCH TOOL



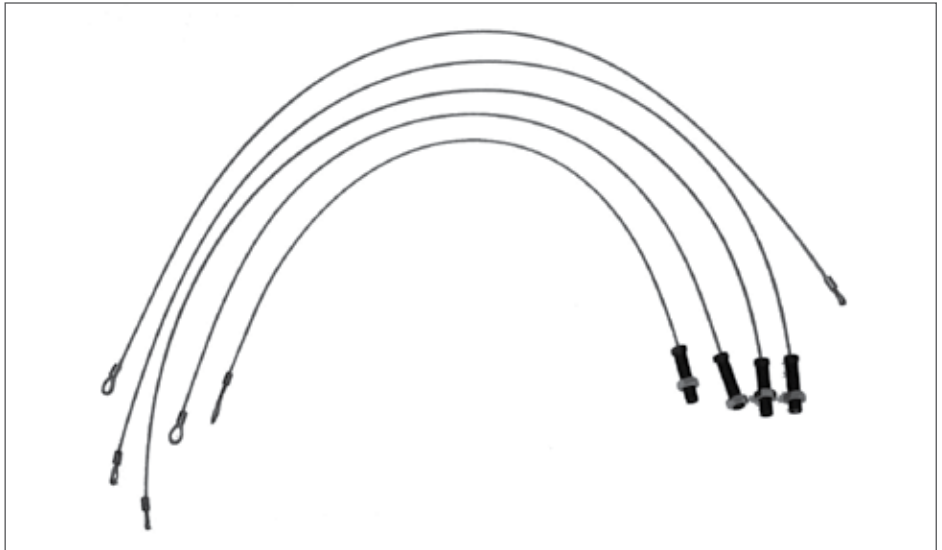
Product Code B12700207000 EA

TURNBUCKLE



Product Code B12200069000 EA

CABLES



Moving deck cable assembly

Product Code B12100280000 EA

Upper scissors cable

Product Code B12200066002 EA

Upper deck cable

Product Code B12200066003 EA

Lower deck cable

Product Code B12200066004 EA

Lower Scissors Cable

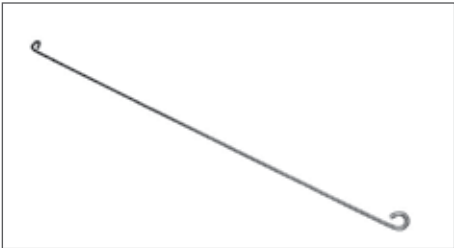
Product Code B12200067000 EA

CABLE SHAFT



Product Code B12350032000 EA

WIRE



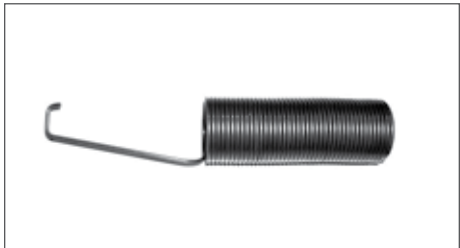
Product Code B12200094000 EA

BUMPER (BAG OF 10)



Product Code B12200032000BG BG

KEEPER SPRING



Product Code B12200125000 EA

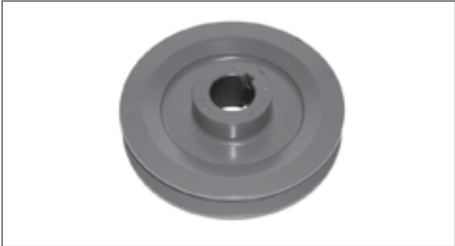
ELEVATOR ASSEMBLY

SET SCREW 3/18-16 X 2 3/4



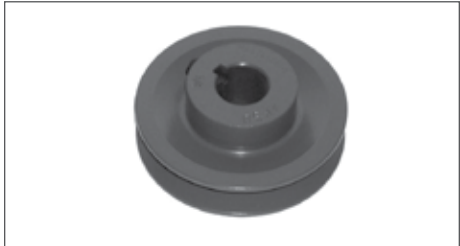
Product Code B11102262001 EA

BALL WHEEL DRIVE SHEAVE



Product Code B12400035003 EA

SMALL REAR CROSS SHEAVE



Product Code B12400035006 EA

CROSS CONVEYOR DRIVE SHEAVE



Product Code B12400035008 EA

LONG TURRET DRIVE SHEAVE



Product Code B12400035009 EA

WASHER



Product Code B12400139003 EA

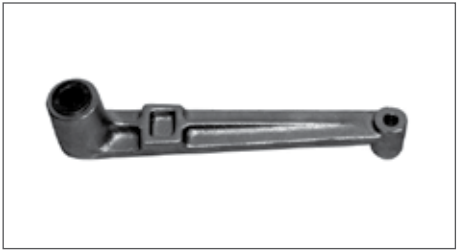
UNIVERSAL JACK SHAFT



A precision machined shaft that will fit either the Right or Left side of the elevator.

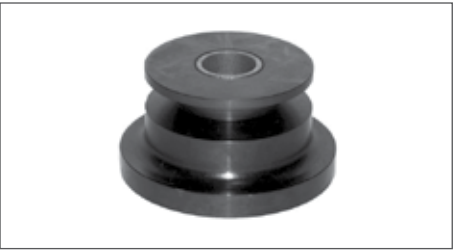
Product Code B12400810000 EA

ARM & BEARING ASSEMBLY



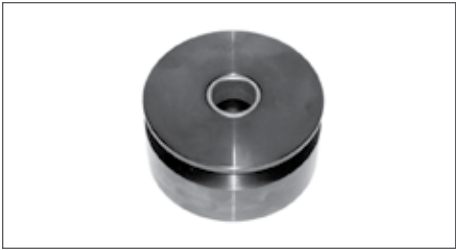
Product Code B12400254000 EA

PIN WHEEL DRIVE PULLEY 'A'



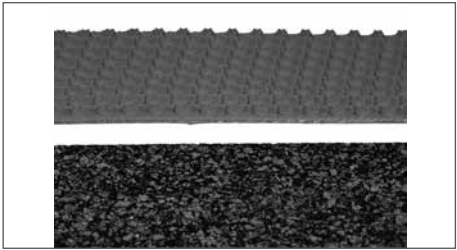
Product Code B12400126000 EA

PIN WHEEL DRIVE PULLEY A-2



Product Code B12402126000 EA

KICKER



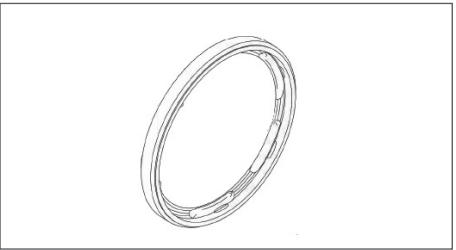
Kicker Strip 10' Roll

Product Code B12860330000 RL

Cork Kicker Strip 10' Roll

Product Code B12860330091 RL

PINWHEEL-USED



Product Code B12860642000-R EA

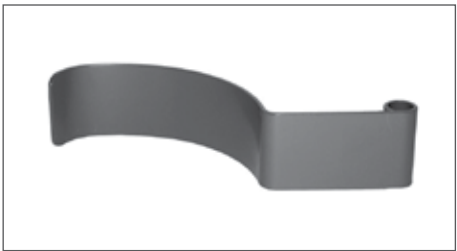
Limited Availability.

MAGNETIC CLUTCH ASSEMBLY



Product Code B12862163000 EA

PIN WHEEL BRAKE



Product Code B12402422000 EA

IDLER ARM STUD



Product Code B12400027000 EA

COLLAR IDLER STUD



Product Code B12400300000 EA

LIFT ROD SUPPORT



Product Code B12862180000 EA

BALL LIFT STUD



Ball lift stud - A

Product Code B12400051000 EA

Ball lift stud - A2

Product Code B12402051000 EA

BALL LIFT PIN



Product Code **B12400053000** EA

LIFT ROD PIN NEW STYLE



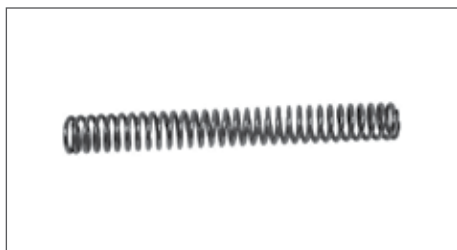
Product Code **B12400848000** EA

SPRING ROD



Product Code **B12400193000** EA

COMPRESSION SPRING



Product Code **B12402121000** EA

SPRING ROD BUSHING DELRIN



Product Code **B90400803000** EA

SPRING ROD WEAR BUSHING



Product Code **B12400803000** EA

LIFT ROD COVER GUM RUBBER 50'



This 50' roll of wear-resistant rubber, resists twisting, does not mark balls, and does not absorb oil.

Product Code **B12400048091** EA

Heavy Duty Lift Rod Cover 50'

Product Code **B9040004800** EA

LOWER LIFT ROD CAP



Product Code **B12402432000** EA

SPRING ROD BUMPER



Product Code **B90400123000** EA

UPPER CAP



Upper Cap
Product Code **B12402043000** EA

UPPER CAP SMALL



Upper cap small
Product Code **B12402042000** EA

OUTER SPRING



Product Code B12400806002 EA

INNER SPRING HOOK



Product Code B12400806003 EA

GUIDE ROLLER SHAFT



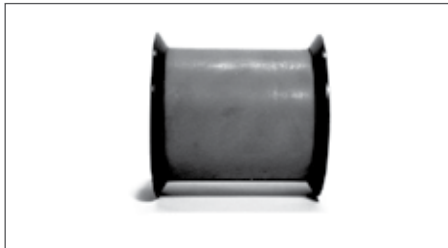
Guide roller shaft
Product Code B12400256000 EA

HEAVY DUTY GUIDE ROLLER



Heavy Duty Guide Roller
Product Code B12862823000 EA
Heavy Duty Hub and Tire
Product Code B128623A EA
Heavy Duty Nylon Flange
Product Code B128623B EA

LOWER PIN WHEEL ROLLER ASSEMBLY



Lower pin wheel roller assembly
Product Code B12400263000 EA
Hub & Tire Lower Pin Wheel
Product Code B12400261000 EA
Lower Pin Wheel Flange
Product Code B12400262000 EA

GUIDE ROLLER ASSEMBLY SMOOTH



Guide Roller Assembly Smooth
Product Code B12400240000 EA
Hub & Tire (Lower Ball Wheel Smooth)
Product Code B90400258000 EA
Lower Ball Wheel Flange
Product Code B12400257000 EA

GUIDE ROLLER ASSEMBLY GROOVED



Guide Roller Assembly Grooved
Product Code B12400268000 EA
Hub & Tire - Grooved
Product Code B90400260000 EA
Lower Ball Wheel Flange
Product Code B12400257000 EA

BELT IDLERS



Machined steel idlers with replaceable ball bearing. Last longer than the traditional sheet metal idler pulleys.
Belt Idler - 5 elevator flat
Product Code B12400297000 EA
Belt Idler Elevator & Turret V
Product Code B12400221000 EA
Belt Idler - 3 Flat Long Turret
Product Code B12400219000 EA
Belt Idler Cross Conveyor Round
Product Code B12400209000 EA

UPPER BW GUIDE ROLLER



Urethane Upper BW Guide Roller Assy
Product Code B90400272000 EA
Upper Hub & Tire
Product Code B90400271000 EA
Nylon Flange Upper Ball Wheel
Product Code B12400269000 EA

UPPER PW GUIDE ROLLER



P.W.G.R. Assy
Product Code B1240026600 EA
 Hub & Tire Upper Pinwheel
Product Code B90400264000 EA
 Flange
Product Code B12400265000 EA

LEAF SPRING



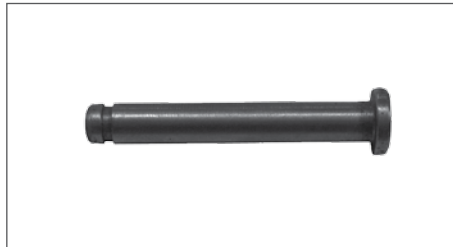
Long Leaf Spring
Product Code B12400055003 EA
 Pin Wiper Leaf Spring
Product Code B12400071000 EA

SPINNING BALL ELIMINATOR



Product Code B12860583000 EA

PIN



Product Code B10229453000

WASHER



Product Code B12400139003

UNIVERSAL URETHANE WHEEL GUARD



Product Code B90400840000 EA

GEARBOX ASSEMBLY

SOLENOID 208V/230V & PLUNGER



Solenoid 208v/230v
Product Code B10688003000 EA
 Plunger
Product Code B10688003003 EA

STARTER BELL CRANK RING PIN (BAG OF 5)



Product Code B10229451000BG BG

LOCKNUT



Product Code B11160005001 EA

BALL RING & ROLLER BEARING



Product Code **B1145010000** EA

INNER RING



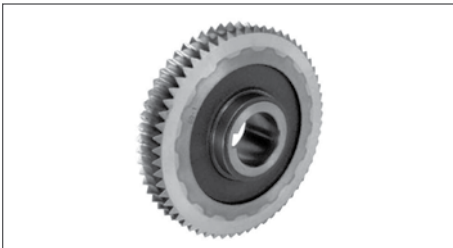
Product Code **B1145020000** EA

OUT OF RANGE RESET LINK



Product Code **B12100040004** EA

WORM WHEEL



Product Code **B12100174002** EA

LEVER ASSEMBLY



Product Code **B12100465000** EA

LOCK COLLAR BAG/5



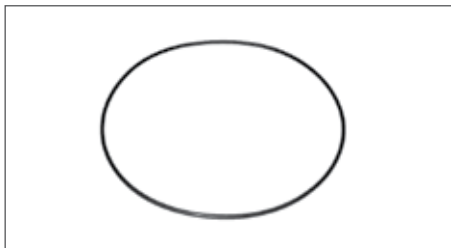
Product Code **V12-100104-5** BG

O RING (BAG OF 10)



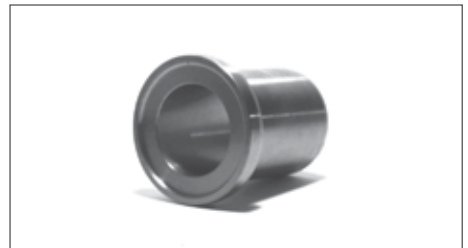
Product Code **B11625501000BG** BG

O RING (BAG OF 2)



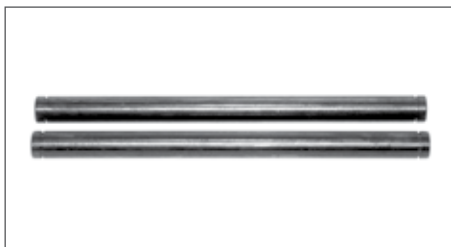
Product Code **B11625530000BG** BG

WORM SHAFT SPACER



Product Code **B12100066000** EA

CLUTCH YOKE PIN



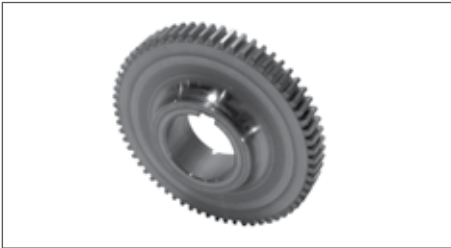
Product Code **B12100168003BG** BG

CLUTCH LEVER PIN



Product Code **B12100168002BG** BG

DETECTOR DRIVE GEAR



Product Code B12100068000 EA

BEARING STUD (BAG OF 2)



Deck Lowering Hook Cam Follower Bearing Stud
Product Code B12100069000BG BG

CAM LEVER SHAFT



Product Code B12100072000 EA

CAM FOLLOWER SHAFT WITH COLLAR



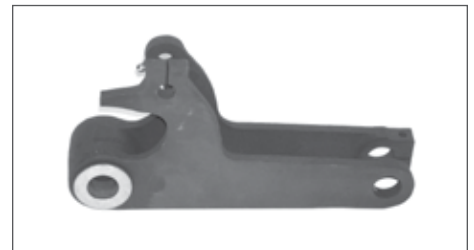
Cam Follower Shaft With Collar
Product Code B12100104000 EA
 Grade & Stud (Bag of 5)
Product Code B121107BG BG

CYCLE CAM



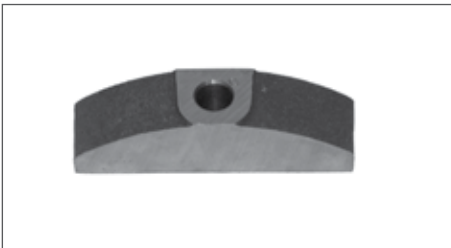
Product Code B12100122000 EA

CAM FOLLOWER



Product Code B12100313000 EA

CLUTCH SHOE



Clutch Shoe Standard Size
Product Code B12100146000 EA
 Clutch Shoe (.030 Large)
Product Code B12100146030 EA

HEAVY DUTY WORM NUT



Product Code B11131516000 EA

YOKE AND BEARING



Product Code B12100370000 EA

SPACER



Product Code B12100185003 EA

SPACER (BAG OF 2)



Product Code B12100185014BG BG

PLATE



Product Code B12100207000 EA

WASHER



Product Code **B12100223000** EA

DECK HOOK CAM LEVER ASSEMBLY



Deck Hook Cam Lever Assembly
 Product Code **B12100242000** EA
 Deck Hook Cam Lever
 Product Code **B12100178000** EA

HEX HEAD BOLT (BAG OF 5)



Product Code **B12100257000BG** BG

LINK



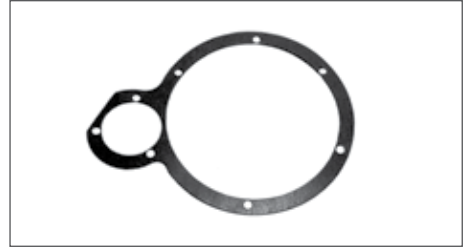
Product Code **B12100025000** EA

OUT OF RANGE LINK ASSEMBLY



Product Code **B12100337000** EA

LH G BX GASKET COVER (BAG OF 5)



Product Code **B12100339000BG** BG

GASKET



Product Code **B12100340000** EA

GASKET OIL SEAL (BAG OF 25)



Product Code **B12100344002BG** BG

GASKET (BAG OF 5)



Product Code **B12100391000BG** BG

HOOK SELECTOR



Product Code **B12100410000** EA
 Bearing Kit
 Product Code **B121041B**

BEARING RETAINER



Product Code **B12100477000** EA

CLUTCH LEVER ASSEMBLY



Product Code **B12100484000** EA

MOVING DECK & SCISSOR CAM



Moving Deck & Scissor Cam for Scotch Yoke
Product Code B12102794000 EA
 Moving Deck & Scissor Cam for Lowering Links
Product Code B12100828002 EA

2-1 MAIN SHAFT



Product Code B12100829000 EA

DECK LIFT HOOK CAM



Product Code B12100831000 EA

CLUTCH RESET LEVER



Product Code B12102176000 EA

TRIGGERING LINK (BAG OF 5)



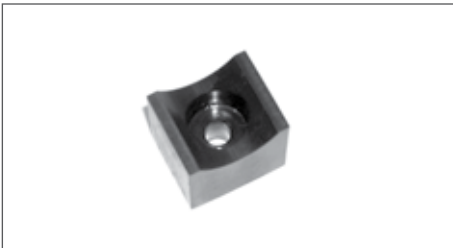
Product Code B12102363000BG BG

STUD



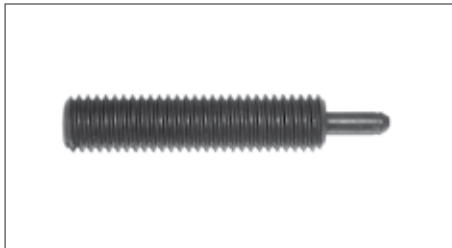
Product Code B12102754000 EA

BLOCK



Product Code B12102791000 EA

STUD



Product Code B12102792000 EA

PINSETTER MOTOR PULLEY



Pinsetter Motor Pulley 'A'
Product Code B12400081000 EA
 Pinsetter Motor Pulley Jet Back
Product Code B12502410000 EA
 Pinsetter Motor Pulley A-2
Product Code B12402081000 EA

OIL SEAL KIT



Product Code B12860603000 EA

CLUTCH DRIVE DISC



Clutch Drive Disc
Product Code B12860613000 EA
 Clutch Drive Disc facing Kit
Product Code B12862864005 EA

CLUTCH DISC



Product Code B12860626000 EA

CLUTCH RELEASE LINK



Product Code **B12862867000** **EA**

CLUTCH PULLEY



Clutch Pulley & Bearing Assembly
Product Code **B12860717000** **EA**
 Clutch Pulley & Facing Only
Product Code **B12860630000** **EA**
 Clutch Pulley Bearing Only
Product Code **B12860716000** **EA**
 Clutch Pulley Facing Kit
Product Code **B12862864003** **EA**

COVER & PIN



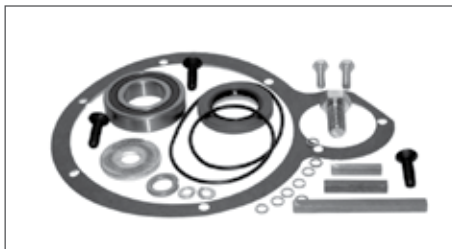
Cover & Pin Assembly
 Comes complete with bearing, oil seal, O ring, paper gaskets, and copper mounting gaskets.
Product Code **B12860628002** **EA**

WORM SHAFT



Worm Shaft Assembly
 This 60:1, precision ground, heat treated shaft comes complete with all bearings, seals and gaskets.
Product Code **B12860172000** **EA**
 Worm Shaft Only
Product Code **B12860171000** **EA**

1 TO 1 KIT



Product Code **B12862859000** **EA**

YOKE REPAIR KIT



Product Code **B12860672000** **EA**

AUTO OUT OF RANGE KIT



Product Code **B121060** **EA**

MAINTENANCE TIP:

The Gearbox Clutch Assembly should be serviced yearly. By removing the clutch assembly, you will be able to inspect the worm shaft, clutch shoes/facings, drive disc, and clutch disc for undue wear. Cleaning, lubricating, and reassembly of the clutch should take about an hour. This is also a good time to be sure that the Deck Jam Micro Switch is working properly.



SPLINE NUT 3/8-24



Product Code **B11155401002** EA

PIVOT



Product Code **B12300178000** EA

STEP WASHER



Product Code **B12300189000** EA

BEARING & HOUSING ASSEMBLY



Bearing & Housing Assembly
 Product Code **B12300160000** EA
 Bearing
 Product Code **B12300160003** EA

ORIGINAL BEARING & HOUSING



Product Code **B12300164000** EA

VIBRATOR SHAFT



Our hardened steel, one-piece shaft is machined for a tight bearing fit that will extend the life of the shaft.
 Product Code **B12300141000** EA

SHAFT



Product Code **B12300149000** EA

CLAMP & PIN ASSEMBLY



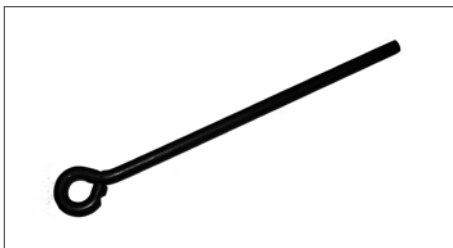
Clamp & Pin Assembly RH
 Product Code **B12300168000** EA
 Clamp & Pin Assembly LH
 Product Code **B12300169000** EA

BOTTOM PIT FRAME ASSEMBLY



Product Code **B12300131000** EA

SPRING GUIDE



Product Code **B12300170000** EA

COMPRESSION SPRING



Product Code **B12300172000** EA

PIT FRAME ASSEMBLY



Product Code **B12860659000** EA

REAR PIER



Rear Pier

Product Code **B12300077000** **EA**

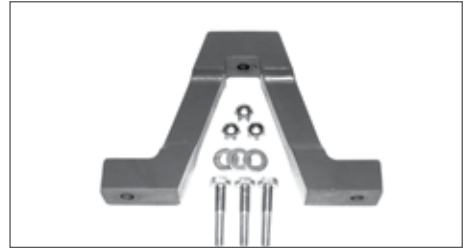
RUBBER PIT MOUNT



Black Rubber Mount

Product Code **B90675000000** **EA**

FRONT PIT MOUNT



This one-piece urethane mount is requested by most mechanics.

Product Code **B90300076000** **EA**

REAR PIT MOUNT



Product Code **B90300077000** **EA**

PIT RUG



Pit Rug

Product Code **B12300103000** **EA**

Economy Pit Rug

Product Code **B12300103E** **EA**

PIT CARPET COVER



Product Code **B12862919000** **EA**

Velcro Carpet Cover

Product Code **B12300103-V**

DEFLECTOR



LH Deflector

Product Code **B12300207000** **ESA**

RH Deflector

Product Code **B12300208000** **EA**

PIT FRAME CONVERSION KIT



Product Code **B12860624000** **EA**

LEVER & BRACKET RH & LH



Lever & Bracket RH

Product Code **B12300192000** **EA**

Lever & Bracket LH

Product Code **B12300193000** **EA**

BELT IDLER PIT & ASSEMBLY



Machined steel idlers with replaceable ball bearings. Last longer than the traditional sheet metal idler pulleys.

Belt Idler Pit

Product Code **B12300075000** **EA**

STEEL JOGGER ARM



Steel Jogger Arm

Product Code **B12300163000**

Steel Jogger Arm Assembly

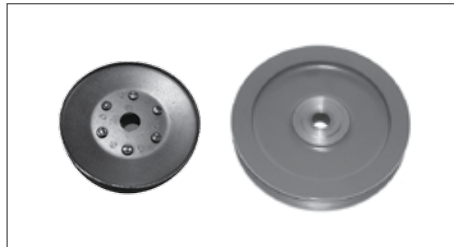
Product Code **B12300194000**

PIT SHAFT DRIVE PULLEY



Product Code **B12300244000** **EA**

PULLEY ASSEMBLY



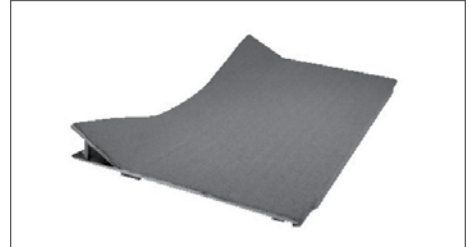
Pulley Assembly Small

Product Code **B12300071000** **EA**

Pulley Assembly Large

Product Code **B12300073000** **EA**

PIT BOARD



Fiberglass Pit Board

Product Code **B12860620002** **EA**

Fiberglass Pit Board Assembly

Product Code **B12860620003** **EA**

Wood Pit Board Assembly

Product Code **B12860620004** **EA**

Wood Pit Board

Product Code **B12860620005** **EA**

MAINTENANCE TIP:

Help extend the life of your Heavy Duty Carpet Covers (B12862919000), by keeping an extra rotation set on hand. Be sure to check the pit height (1/8" – 3/16") to the front edge of the ball wheel for proper ball transfer.

RAKE ASSEMBLY

A-2 RAKE CRANK PIVOT ASSEMBLY



Product Code **B12250273000** EA

A-2 RAKE CRANK PIVOT ASSEMBLY



Product Code **B12250275000** EA

ACTUATING LINK



Product Code **B12250040000** EA

RAKE CRANK ROD



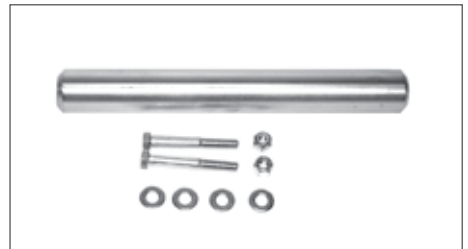
Rake Crank Rod 40 7/8" ST
Product Code B12250278002 EA
 Rake Crank Rod 40" TP
Product Code B12250022002 EA

COLLAPISBLE CRANK ROD TP & ST



Collapsible Crank Rod TP
Product Code B12250289000 EA
 Collapsible Crank Rod ST
Product Code B12252309000 EA

RAKE SHAFT KIT



Rake Shaft Repair Kit
Product Code B12860607000 EA
 Japanese Rake Shaft Kit
Product Code B12860665000 EA

ROD 59 1/2"



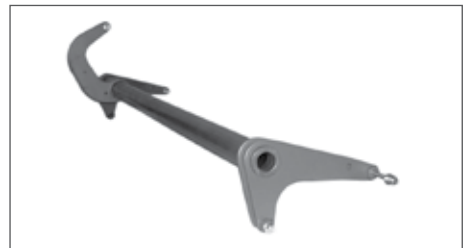
Product Code **B12252024004** EA

SWEEP ARM



Product Code **B12252037000** EA

A-2 RAKE LIFT SHAFT



Product Code **B12252048000** EA

SHOCK



Product Code **B12252338000** EA

PIVOT



Product Code **B12252355091** EA

TRIP ARM ASSEMBLY



Made from cast aluminum, this dependable trip arm comes with the oilite bearings installed.
Product Code B12252354000 EA

TRIP LEVER ROD



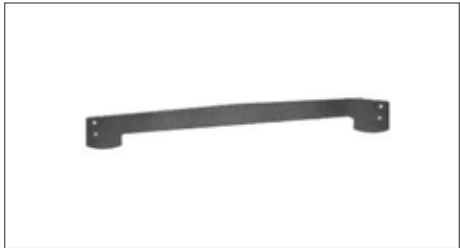
Product Code **B12252356000** **EA**

RAKE SHAFT ASSEMBLY



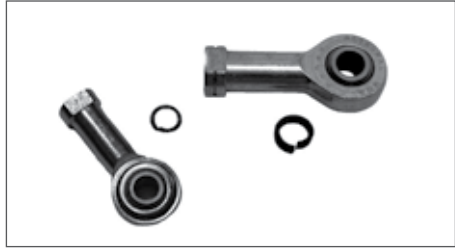
Product Code **B12862186000** **EA**

RAKE BOARD



Product Code **B12252373000** **EA**

ROD END KIT RH & LH



Rod end Kit RH
Product Code **B12860576000** **EA**
Rod end Kit LH
Product Code **B12860577000** **EA**

SPARE ARM ASSEMBLY (RAKE)



This is a single rake arm that can be used on either side of our Rake Shaft Assembly (B12862186000). A handy item if one side of the RSA is broken or bent.
Product Code **B12862186006** **EA**

TURRET ASSEMBLY

BOLT



Product Code **B11106525000** EA

SPRNG GUIDE



Product Code **B12150004000** EA

TORSION LATCH



Product Code **B12150011000** EA

TURRET RING



Product Code **B12150040000** EA

BELL CRANK



Replace your worn indexing bellcrank with our exact replacement.

Product Code **B12150051000** EA

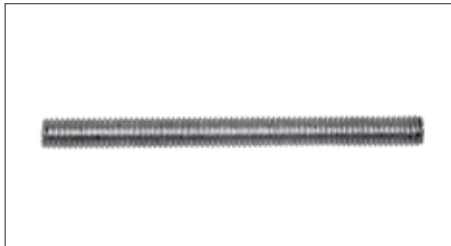
ROLLER STUD



Roller Stud
Product Code **B12150056003** EA

Roller Stud
Product Code **B12150056002** EA

STUD



Product Code **B12150062000** EA

TRIP LEVER SHAFT



Product Code **B12150069000** EA

INTERLOCK PROBE



Product Code **B12150086000** EA

CHUTE ASSEMBLY



Product Code **B12150108000** EA

CENTER CHUTE REPAIR PLATE



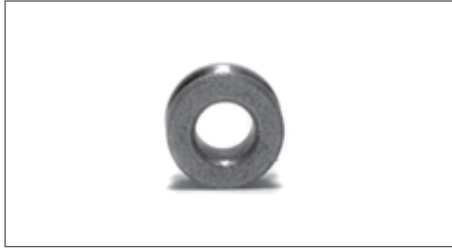
Product Code **B12150109000** EA

SEAL



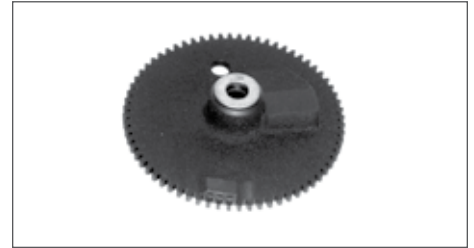
Product Code **B12150115000** EA

SPRING WHEEL



Spring Wheel
Product Code **B12150130005** EA
Spring Wheel
Product Code **B12150130006** EA

TURRET DELAY GEAR



Product Code **B12150138000** EA

INTERLOCK SHAFT



Product Code **B12150143003** EA

WASHER



Product Code **B12150157003** EA

BLOCKING FINGER



LH Blocking Finger
Product Code **B12150176000** EA
RH Blocking Finger
Product Code **B12150200000** EA

SHAFT



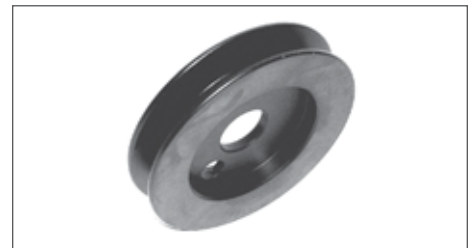
Product Code **B12150216000** EA

TURRET CLUTCH DRIVE PULLEY OFFSET



Used with cast indexing cams.
Product Code **B12150219000** EA

TURRET CLUTCH DRIVE PULLEY



This case harden pulley is designed to replace the two-piece metal discs found on later machines.
Product Code **B12150306000** EA

TURRET CLUTCH TOP PULLEY ASSEMBLY



Product Code **B12150220000** EA

ROLLER & BEARING ASSEMBLY



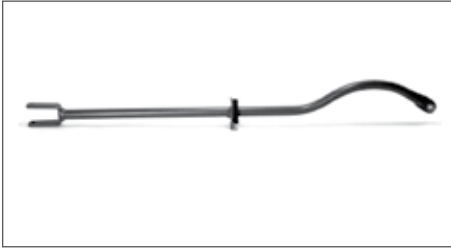
Product Code **B12150226000** EA

LINKAGE ASSEMBLY



Product Code **B12150227000** EA

LONG TURRET LINK



Product Code **B12150234000** EA

LATCH



Product Code **B12150235000** EA

TIME DELAY GEAR SHAFT



Product Code **B12150254000** EA

TURRET SLIDE PLATE



Product Code **B12150258000** EA

LEVER



Product Code **B12150279000** EA

LONG LINK & LEVER ASSEMBLY



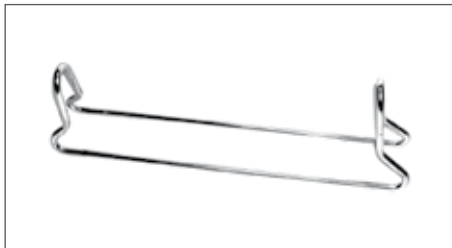
Product Code **B12150287000** EA

SHORT LINK



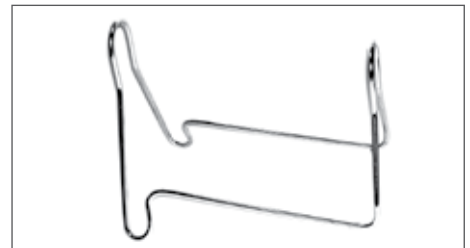
Product Code **B12150289000** EA

INNER GUIDE



Inner Guide 2, 3, 4, 6, 8, 9
 Product Code **B12150294000** EA
 Inner Guide 1, 7, 10
 Product Code **B12150295000** EA

GUIDE OUTER



Guide Outer 2, 3, 4, 6, 8, 9
 Product Code **B12150297000** EA
 Guide Outer 1, 7, 10
 Product Code **B12150296000** EA

INDEXING ROLLER



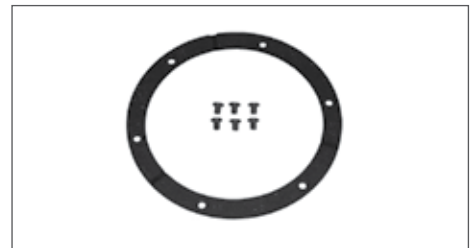
Product Code **B12150303000** EA

FRICTION DISC ASSEMBLY NYLON FACING



Friction Disc Assembly Nylon Facing
 Product Code **B12860804000** EA
 Clutch Facing - 3 piece
 White nylon facing for improved performance
 Product Code **B12860805000** EA

FACING KIT "ORIGINAL" STYLE



Product Code **B12862864002** EA

TURRET WIRE PAD & CUSHION



Product Code **B90150182000** EA

PIN



Product Code **B12150253000** EA

SPRING



Product Code **B12150213000** EA

MAINTENANCE TIP:

Regular maintenance of the Turret Clutch and related parts will help keep your pinsetter running smoothly. Always check for excessive play in the indexing linkage. Very little to no play at all, along with proper adjustments, results in trouble free indexing. Yearly inspection, cleaning, and lubrication of the clutch itself will help eliminate multiple indexing and noise. It is also recommended to check that the Turret Jam Switch is working properly.



ELECTRICAL COMPONENTS

TOGGLE SWITCH



Product Code **B11615501000** EA

RECTIFIER



Product Code **B12750079000** EA

CIRCUIT BREAKER



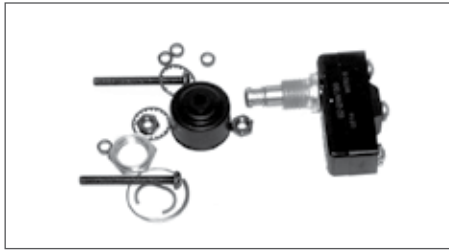
Product Code **B12750746002** EA

PINSETTER MOTOR



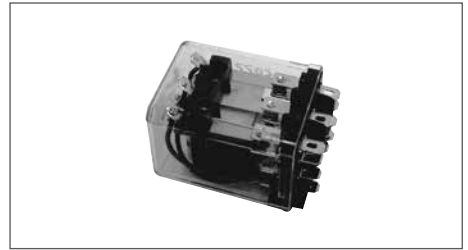
OEM style over 59 lbs. Ideal for proper belt tension.
Product Code B12752056000 EA
 Used Pinsetter Motor
Product Code B12752056-R EA

MICRO SWITCH KIT



Micro Switch Kit
Product Code B12860667000 EA
 Micro Switch Kit CC
Product Code B12860668000 EA

3 PDT 24 V RELAY



Product Code 755503045
 Relay Base
Product Code 757003039

FUSTATS 3-2/10



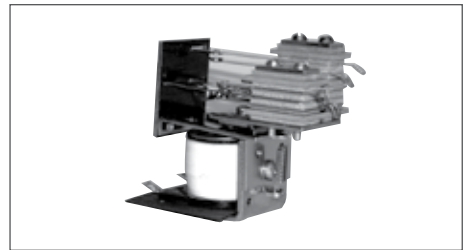
Product Code B12750180000 EA

TRANSFORMER



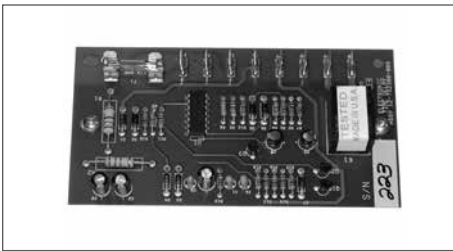
Product Code B12862164000 EA

RELAY



Product Code B12862827000 EA

TIME DELAY MODULE



Product Code B12862890000 EA

48" BLACK LIGHT (6 PK)



Product Code B12862933000BX EA

120 V DUAL PINDECK LIGHT 48"



Product Code 090008035 EA
 Transformer
Product Code 090008095 EA

SOLENOID BOX ASSEMBLY WITH RELAY



Use with QubicaAMF Scoring & FBox
Product Code SB643024 EA

4-1 WORM WHEEL ADJUST TOOL



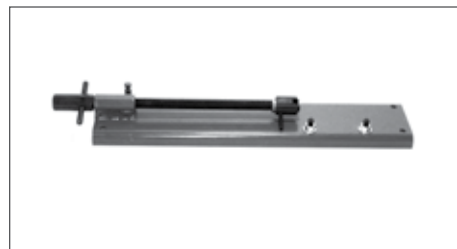
Product Code **B12100512000** EA

ROD COVER AIR FITTING



Product Code **B12700268000** EA

DECK JAM SPRING COMPRESSOR



Product Code **B12700110000** EA

PIN FORK



Product Code **B158100** EA

GREASE NEEDLES (BOX OF 12)



Product Code **B12700126000BX** BX

DECK JAM SWITCH CHECKER



Product Code **B12700207000** BX

SURE STOP TURRET JIG



Product Code **SSTJ** EA

SCISSOR SPRING INSTALLER TOOL QTY. 1



Product Code **B12700271000**

BELTS

1 - MOTOR TO GEAR BOX

B10635304000 Standard A2
 B10635325000 A2 1.5" shorter
 B10635326000 A2 2.5" longer (50 cycles)
 B12400034002 Standard A

2 - MOTOR TO ELEVATOR

B10635303000 Standard A2
 B10635306000 A2, 50 Cycles
 B10635315000 A2 w/tension conversion kit
 B10635330000 A2
 B12400034003 A and Jet Back
 B10635329000 Standard Jet Back

3 - V BELT CROSS DRIVE (JACK SHAFT)

B12400034004

4 - V BELT BALL WHEEL

B12400227000
 B12400227000S Spliced

5 - V BELT PIN WHEEL

B12400034005

6 - CROSS CONVEYOR DRIVE

B10635309000 V Belt
 B12400034007 Round

7 - LONG TURRET BELT

B12400223000
 B12400314000 Bevel Gear Drive

8 - SHORT TURRET BELT

B12150113000 48"
 B12150113600 48.5"

9 - CROSS CONVEYOR BELT

B12450037000
 B12450037000G Hi Grip

10 - POWER LIFT BELT

B10635317000 V Belt
 B53520235000 Poly V

11 - PIT DRIVE BELT

B12300082003

12 - ACCELERATOR DRIVE BELT

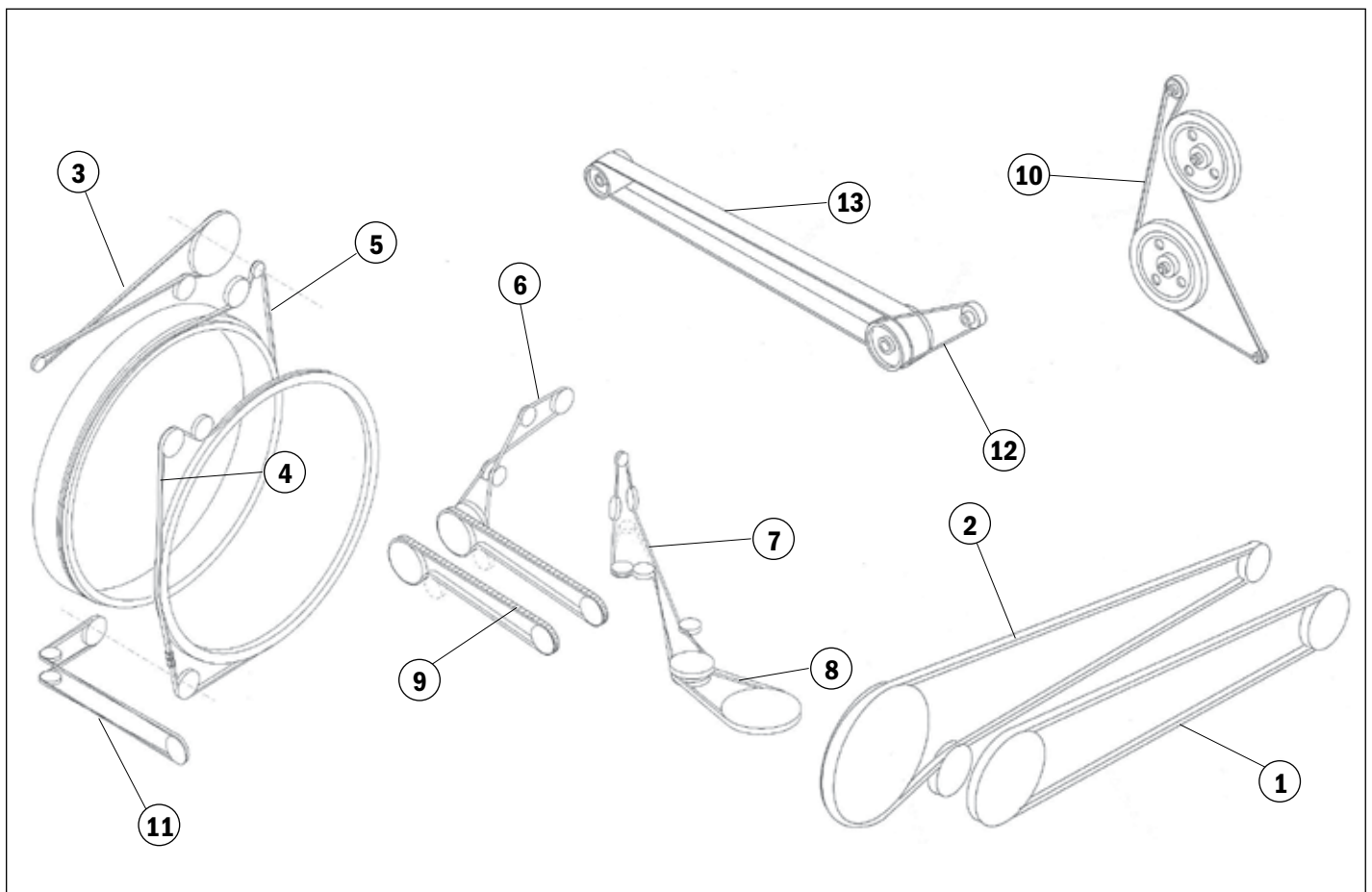
B10635112000 2 23/32 Pulley
 B10635118000 2 1/32 Pulley
 B10635113000 1 11/16 Pulley
 B10635124000 1 1/2 Pulley

13 - ACCELERATOR FLAT BELT (WHITE)

B10635126000 ACC Belt Long

MOTOR TO GB BELT

B12400329000 Motor to GB Belt







QUBICA  **AMF**
B - 2 HARDWARE
2



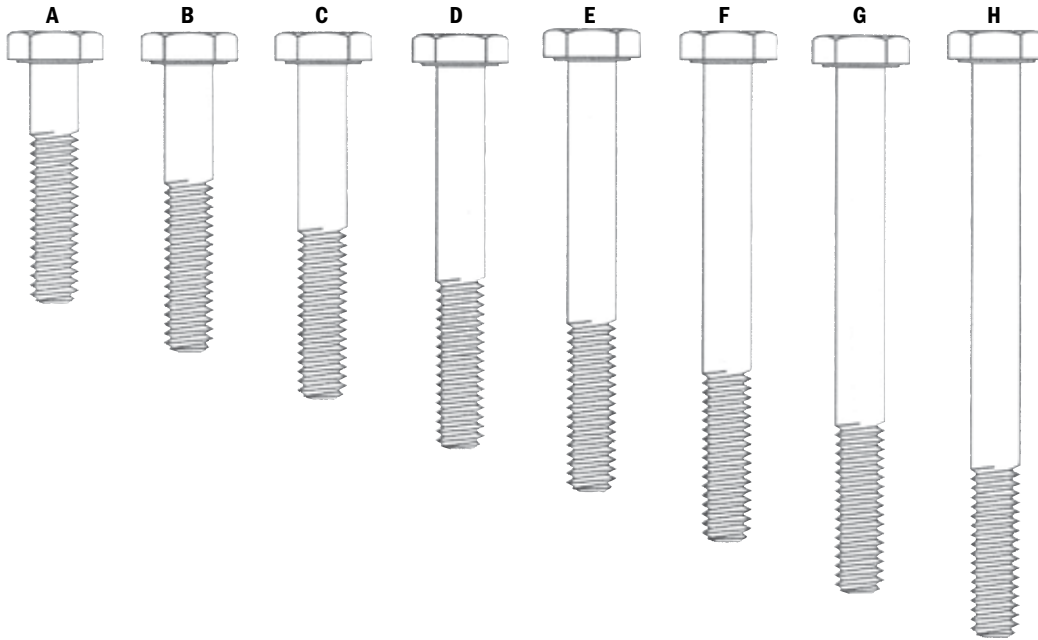
HEX HEAD CAP SCREWS

1/4 - 20 GRADE 2

PART	SUB-SECTION	SIZE	QUANTITY
A	B11001186001BG	1/4-20 Grade 2 1/4-20 x 1 1/4	Bag of 25
B	B11001188001BG	1/4-20 Grade 2 1/4-20 x 1 1/2	Bag of 25
C	B11001190001BG	1/4-20 Grade 2 1/4-20 x 1 3/4	Bag of 25
D	B11001192001BG	1/4-20 Grade 2 1/4-20 x 2	Bag of 25

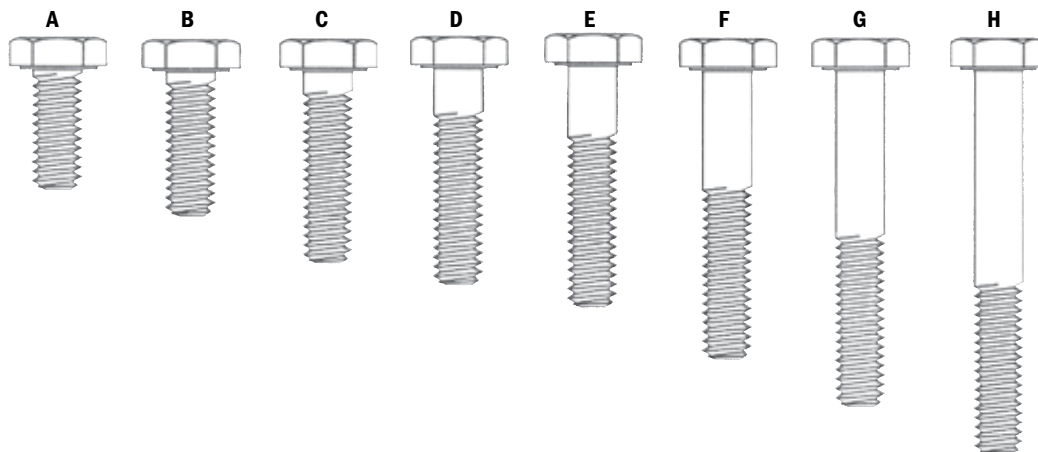
1/4 - 20 GRADE 2 - CONTINUED

PART	SUB-SECTION	SIZE	QUANTITY
E	B11001193001BG	1/4-20 Grade 2 1/4-20 x 2 1/4	Bag of 25
F	B11001194001BG	1/4-20 Grade 2 1/4-20 x 2 1/2	Bag of 25
G	B11001195001BG	1/4-20 Grade 2 1/4-20 x 2 3/4	Bag of 25
H	B11001196001BG	1/4-20 Grade 2 1/4-20 x 3	Bag of 25



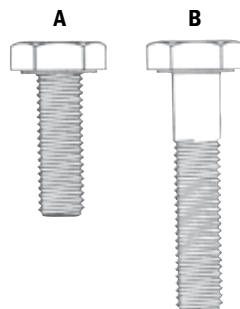
1/4 - 20 GRADE 5

PART	SUB-SECTION	SIZE	QUANTITY
A	B11002001001BG	1/4-20 Grade 5 1/4-20 x 5/8	Bag of 25
B	B11002002001BG	1/4-20 Grade 5 1/4-20 x 3/4	Bag of 25
C	B11002004001BG	1/4-20 Grade 5 1/4-20 x 1	Bag of 25
D	B11001185001BG	1/4-20 Grade 5 1/4-20 x 1 1/8	Bag of 25
E	B11002005001BG	1/4-20 Grade 5 1/4-20 x 1 1/4	Bag of 25
F	B11002006001BG	1/4-20 Grade 5 1/4-20 x 1 1/2	Bag of 25
G	B11002007001BG	1/4-20 Grade 5 1/4-20 x 1 3/4	Bag of 25
H	B11002008001BG	1/4-20 Grade 5 1/4-20 x 2	Bag of 25



1/4 - 28 GRADE 5

PART	SUB-SECTION	SIZE	QUANTITY	
A	B11001222001BG	1/4-28 Grade 5	1/4-28 x 3/4	Bag of 25
B	B11002035001BG	1/4-28 Grade 5	1/4-28 x 1 1/4	Bag of 25

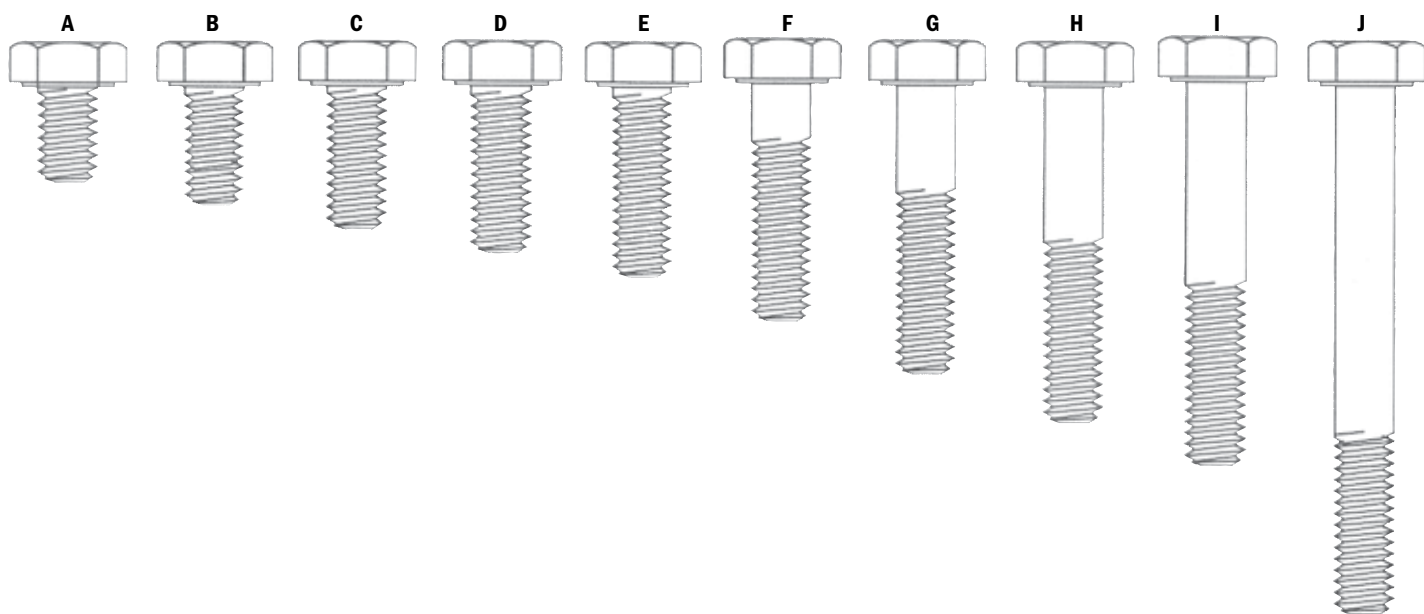


5/16 - 18 GRADE 2

PART	SUB-SECTION	SIZE	QUANTITY	
A	B11001258001BG	5/16-18 Grade 2	5/16-18 x 1/2	Bag of 25
B	B11001260001BG	5/16-18 Grade 2	5/16-18 x 5/8	Bag of 25
C	B11001262001BG	5/16-18 Grade 2	5/16-18 x 3/4	Bag of 25
D	B11001263001BG	5/16-18 Grade 2	5/16-18 x 7/8	Bag of 25
E	B11001264001BG	5/16-18 Grade 2	5/16-18 x 1	Bag of 25

5/16 - 18 GRADE 2 - CONTINUED

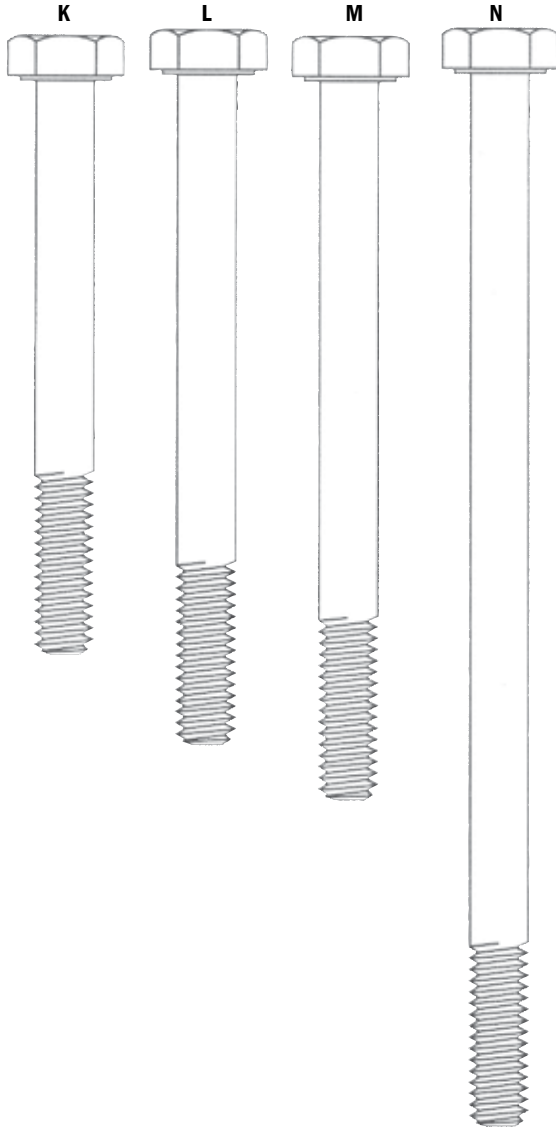
PART	SUB-SECTION	SIZE	QUANTITY	
F	B11001266001BG	5/16-18 Grade 2	5/16-18 x 1 1/4	Bag of 25
G	B11001268001BG	5/16-18 Grade 2	5/16-18 x 1 1/2	Bag of 25
H	B11001270001BG	5/16-18 Grade 2	5/16-18 x 1 3/4	Bag of 25
I	B11001272001BG	5/16-18 Grade 2	5/16-18 x 2	Bag of 25
J	B11001275001BG	5/16-18 Grade 2	5/16-18 x 2 3/4	Bag of 25



HEX HEAD CAP SCREWS - CONTINUED

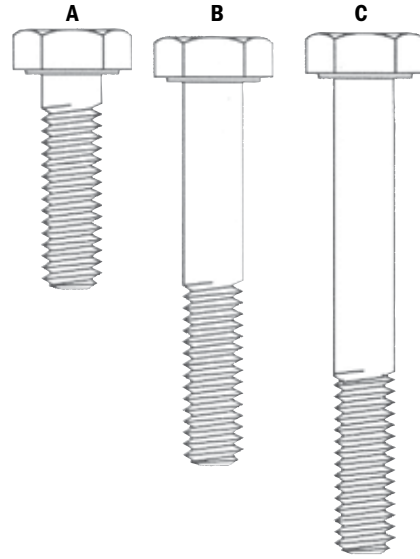
5/16 - 18 GRADE 2 - CONTINUED

PART	SUB-SECTION	SIZE	QUANTITY
K	B11001276001BG	5/16-18 Grade 2 5/16-18 x 3	Bag of 25
L	B11001278001BG	5/16-18 Grade 2 5/16-18 x 3 1/2	Bag of 25
M	B11002075001BG	5/16-18 Grade 2 5/16-18 x 3 3/4	Bag of 25
N	B11001286001BG	5/16-18 Grade 2 5/16-18 x 5 1/2	Bag of 25



5/16 - 18 GRADE 5

PART	SUB-SECTION	SIZE	QUANTITY
A	B11001265001BG	5/16-18 Grade 5 5/16-18 x 1 1/8	Bag of 25
B	B11002068001BG	5/16-18 Grade 5 5/16-18 x 2	Bag of 25
C	B11002070001BG	5/16-18 Grade 5 5/16-18 x 2 1/2	Bag of 25



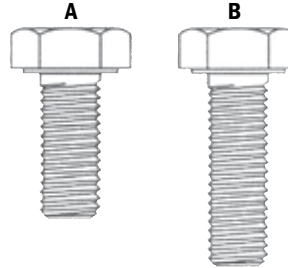
5/16 - 24 GRADE 2

PART	SUB-SECTION	SIZE	QUANTITY
A B11001304001BG	5/16-24 Grade 2	5/16-24 x 1	Bag of 25



5/16 - 24 GRADE 5

PART	SUB-SECTION	SIZE	QUANTITY
A B11002092001BG	5/16-24 Grade 5	5/16-24 x 3/4	Bag of 25
B B11002094001BG	5/16-24 Grade 5	5/16-24 x 1	Bag of 25



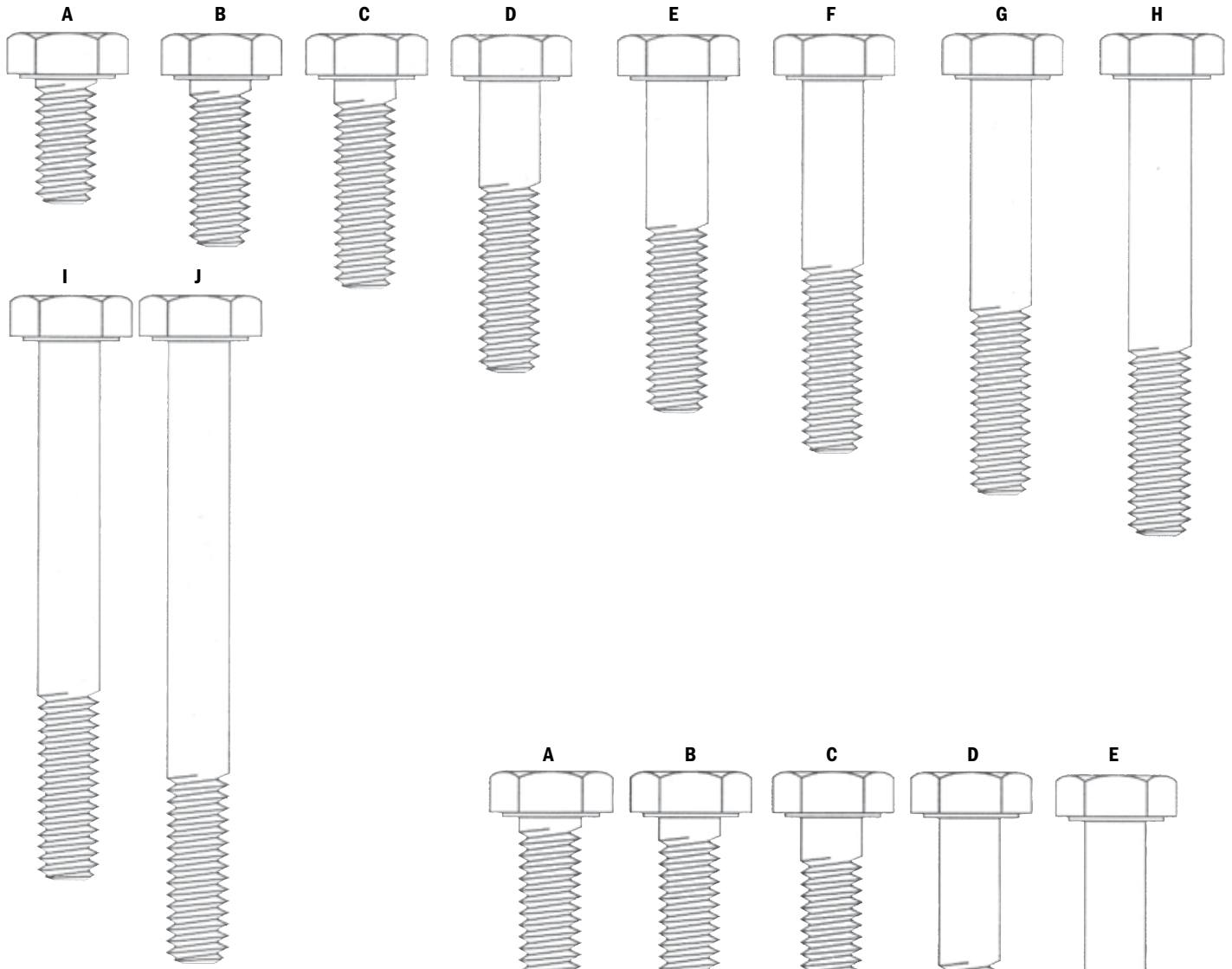
HEX HEAD CAP SCREWS - CONTINUED

3/8 - 16 GRADE 2

PART	SUB-SECTION	SIZE	QUANTITY
A	B11001342001BG	3/8-16 Grade 2 3/8-16 x 3/4	Bag of 10
B	B11001344001BG	3/8-16 Grade 2 3/8-16 x 1	Bag of 10
C	B11001346001BG	3/8-16 Grade 2 3/8-16 x 1 1/4	Bag of 10
D	B11001350001BG	3/8-16 Grade 2 3/8-16 x 1 3/4	Bag of 10
E	B11001352001BG	3/8-16 Grade 2 3/8-16 x 2	Bag of 10

3/8 - 16 GRADE 2 - CONTINUED

PART	SUB-SECTION	SIZE	QUANTITY
F	B11001353001BG	3/8-16 Grade 2 3/8-16 x 2 1/4	Bag of 10
G	B11001354001BG	3/8-16 Grade 2 3/8-16 x 2 1/2	Bag of 10
H	B11001355001BG	3/8-16 Grade 2 3/8-16 x 2 3/4	Bag of 10
I	B11001357001BG	3/8-16 Grade 2 3/8-16 x 3 1/4	Bag of 10
J	B11001359001BG	3/8-16 Grade 2 3/8-16 x 3 3/4	Bag of 10

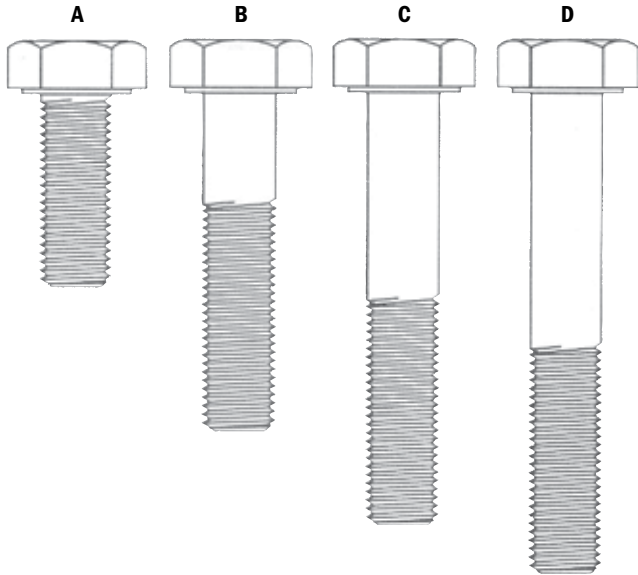


3/8 - 16 GRADE 5

PART	SUB-SECTION	SIZE	QUANTITY
A	B11002124001BG	3/8-16 Grade 5 3/8-16 x 1	Bag of 10
B	B11002125001BG	3/8-16 Grade 5 3/8-16 x 1 1/4	Bag of 10
C	B11001347001BG	3/8-16 Grade 5 3/8-16 x 1 3/8	Bag of 10
D	B11002128001BG	3/8-16 Grade 5 3/8-16 x 2	Bag of 10
E	B11002132001BG	3/8-16 Grade 5 3/8-16 x 3	Bag of 10

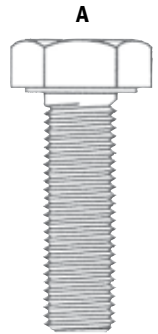
3/8 - 24 GRADE 2

	PART	SUB-SECTION	SIZE	QUANTITY
A	B11001384001BG	3/8-24 Grade 2	3/8-24 x 1	Bag of 10
B	B11001390001BG	3/8-24 Grade 2	3/8-24 x 1 3/4	Bag of 10
C	B11001393001BG	3/8-24 Grade 2	3/8-24 x 2 1/4	Bag of 10
D	B11001394001BG	3/8-24 Grade 2	3/8-24 x 2 1/2	Bag of 10



3/8 - 24 GRADE 5

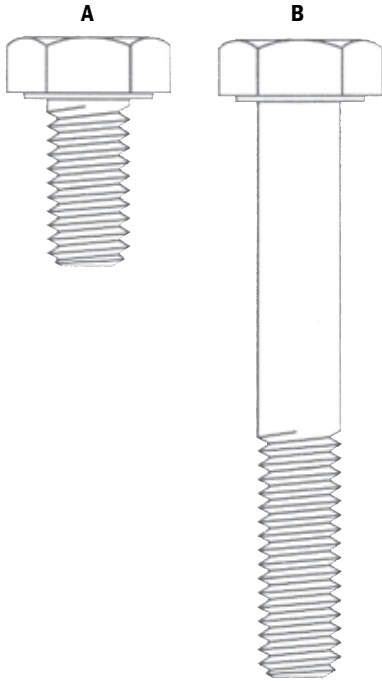
	PART	SUB-SECTION	SIZE	QUANTITY
A	B11002155000BG	3/8-24 Grade 5	3/8-24 x 1 1/4	Bag of 10



HEX HEAD CAP SCREWS - CONTINUED

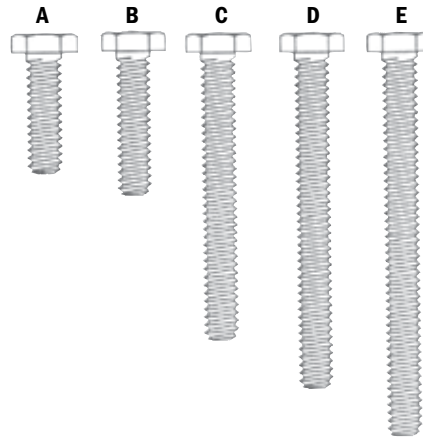
7/16 - 14 GRADE 5 & GRADE 2

PART	SUB-SECTION	SIZE	QUANTITY
A	B11001423001BG	7/16-14 Grade 5 7/16-14 x 7/8	Bag of 10
B	B11001436001BG	7/16-14 Grade 2 7/16-14 x 3	Bag of 10



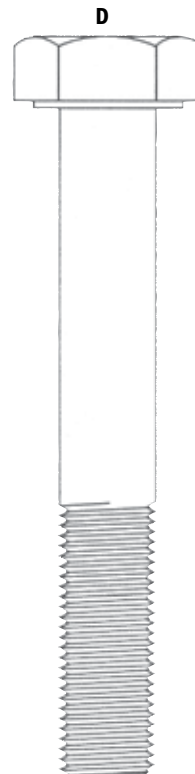
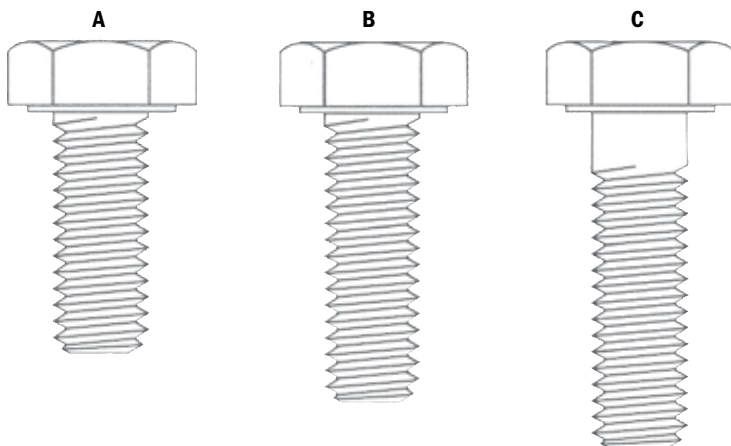
MACHINE SCREWS

PART	SUB-SECTION	SIZE	QUANTITY
A	B11001060001BG	Machine Screws #10-24 x 5/8	Bag of 25
B	B11001062001BG	Machine Screws #10-24 x 3/4	Bag of 25
C	B11001068001BG	Machine Screws #10-24 x 1 1/2	Bag of 25
D	B11001070001BG	Machine Screws #10-24 x 1 3/4	Bag of 25
E	B11001072001BG	Machine Screws #10-24 x 2	Bag of 25



1/2 - 13 GRADE 2, 5 & 1/2 - 20 GRADE 5

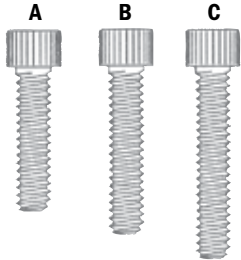
PART	SUB-SECTION	SIZE	QUANTITY
A	B11001506001BG	1/2-13 Grade 2 1/2-13 x 1 1/4	Bag of 10
B	B11001508001BG	1/2-13 Grade 2 1/2-13 x 1 1/2	Bag of 10
C	B11002247000BG	1/2-13 Grade 5 1/2-13 x 1 3/4	Bag of 10
D	B10002006000BG	1/2-20 Grade 5 1/2-20 x 3 1/2	Bag of 10



SOCKET HEAD CAP SCREWS

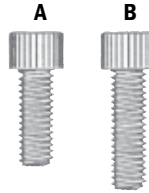
#10 - 24

PART	SUB-SECTION	SIZE	QUANTITY
A B11005092001BG	#10-24	#10-24 x 3/4	Bag of 10
B B11005093001BG	#10-24	#10-24 x 7/8	Bag of 10
C B11005094000BG	#10-24	#10-24 x 1	Bag of 10



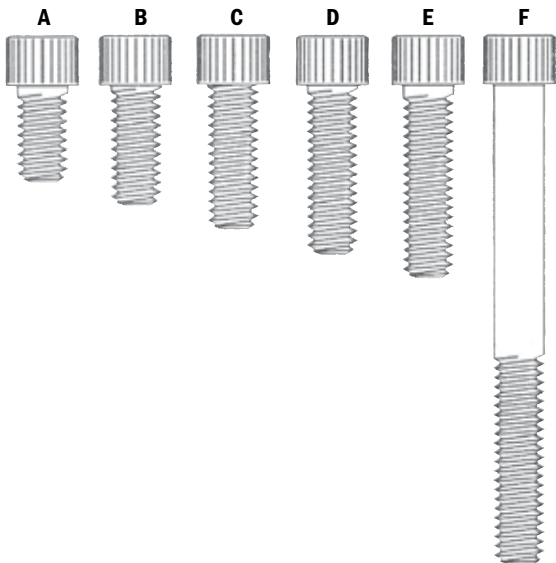
#10 - 32

PART	SUB-SECTION	SIZE	QUANTITY
A B11005118001BG	#10-32	#10-32 x 1/2	Bag of 10
B B11005120001BG	#10-32	#10-32 x 5/8	Bag of 10



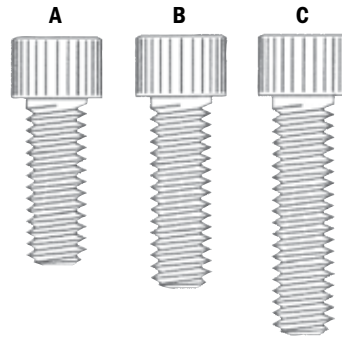
1/4 - 20

PART	SUB-SECTION	SIZE	QUANTITY
A B11005178001BG	1/4-20	1/4-20 x 1/2	Bag of 10
B B11005180001BG	1/4-20	1/4-20 x 5/8	Bag of 10
C B11005182001BG	1/4-20	1/4-20 x 3/4	Bag of 10
D B11005183001BG	1/4-20	1/4-20 x 7/8	Bag of 10
E B11005184001BG	1/4-20	1/4-20 x 1	Bag of 10
F B11005194001BG	1/4-20	1/4-20 x 2 1/2	Bag of 10



5/16 - 18

PART	SUB-SECTION	SIZE	QUANTITY
A B11005263001BG	5/16-18	5/16-18 x 7/8	Bag of 10
B B11005264001BG	5/16-18	5/16-18 x 1	Bag of 10
C B11005266001BG	5/16-18	5/16-18 x 1 1/4	Bag of 10



SOCKET HEAD CAP SCREWS - CONTINUED

3/8 - 16

PART	SUB-SECTION	SIZE	QUANTITY
A B11005354001BG	3/8-16	3/8-16 x 2 1/2	Bag of 10



3/8 - 24

PART	SUB-SECTION	SIZE	QUANTITY
A B10009001001BG	3/8-24	3/8-24 x 2	Bag of 10



1/2 - 20

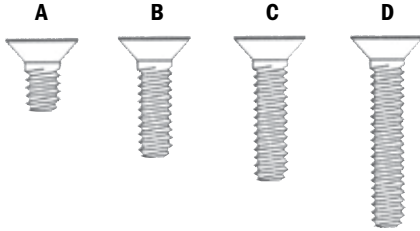
PART	SUB-SECTION	SIZE	QUANTITY
A B11005553001BG	1/2-20	1/2-20 x 2 1/4	Bag of 10



FLAT HEAD SOCKET CAP SCREWS

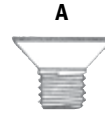
#10 - 24

	PART	SUB-SECTION	SIZE	QUANTITY
A	B11007086001BG	#10-24	#10-24 x 3/8	Bag of 10
B	B11007090001BG	#10-24	#10-24 x 5/8	Bag of 10
C	B11007092001BG	#10-24	#10-24 x 3/4	Bag of 10
D	B11007094000BG	#10-24	#10-24 x 1	Bag of 10



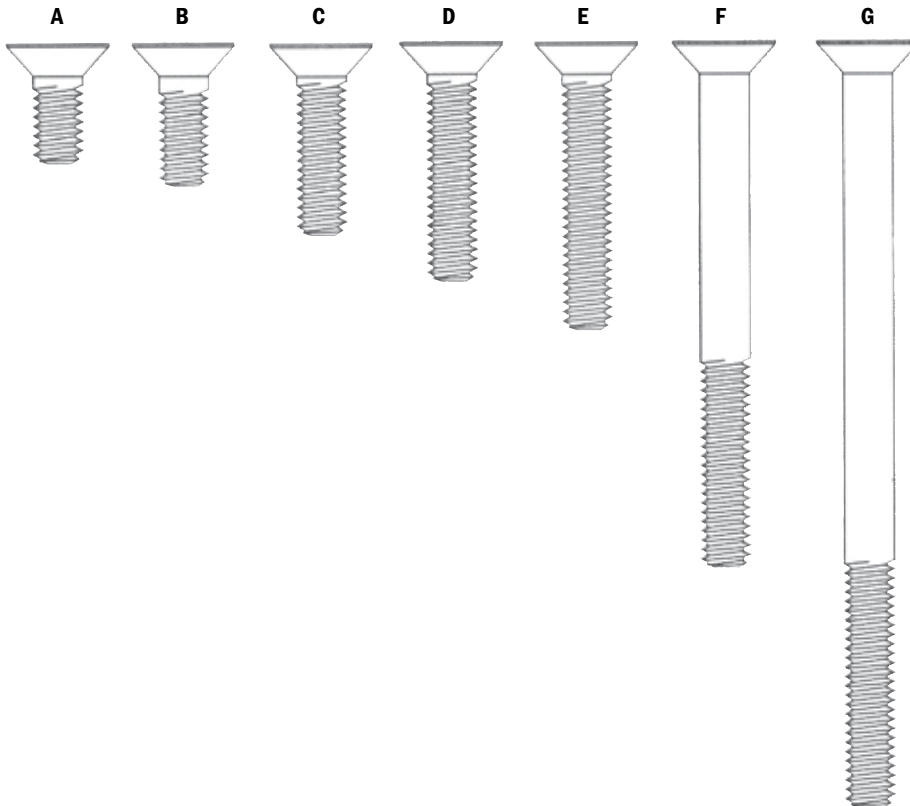
1/4 - 28

	PART	SUB-SECTION	SIZE	QUANTITY
A	B11007216001BG	1/4-28	1/4-28 x 3/8	Bag of 10



1/4 - 20

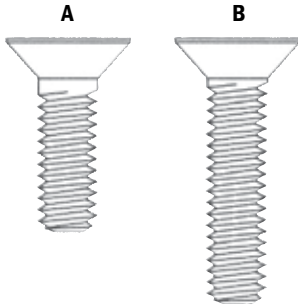
	PART	SUB-SECTION	SIZE	QUANTITY
A	B11007180001BG	1/4-20	1/4-20 x 5/8	Bag of 10
B	B11007182001BG	1/4-20	1/4-20 x 3/4	Bag of 10
C	B11007184001BG	1/4-20	1/4-20 x 1	Bag of 10
D	B11007186001BG	1/4-20	1/4-20 x 1 1/4	Bag of 10
E	B11007188001BG	1/4-20	1/4-20 x 1 1/2	Bag of 10
F	B11007195001BG	1/4-20	1/4-20 x 2 3/4	Bag of 10
G	B11007200001BG	1/4-20	1/4-20 x 4	Bag of 10



FLAT HEAD SOCKET CAP SCREWS - CONTINUED

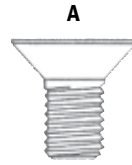
5/16 - 18

	PART	SUB-SECTION	SIZE	QUANTITY
A	B11007264001BG	5/16-18	5/16-18 x 1	Bag of 10
B	B11007267001BG	5/16-18	5/16-18 x 1 3/8	Bag of 10



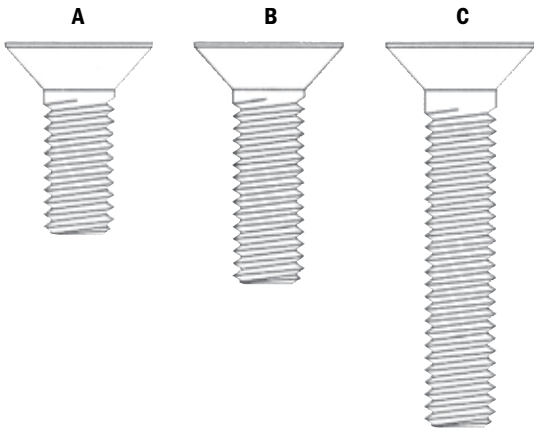
5/16 - 24

	PART	SUB-SECTION	SIZE	QUANTITY
A	B11007300001BG	5/16-24	5/16-24 x 5/8	Bag of 10



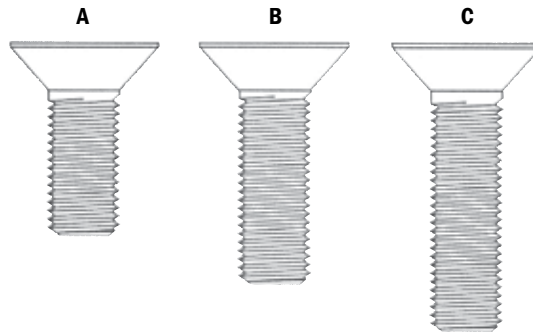
3/8 - 16

	PART	SUB-SECTION	SIZE	QUANTITY
A	B11007344001BG	3/8-16	3/8-16 x 1	Bag of 10
B	B11007346001BG	3/8-16	3/8-16 x 1 1/4	Bag of 10
C	B11007352001BG	3/8-16	3/8-16 x 2	Bag of 10



3/8 - 24

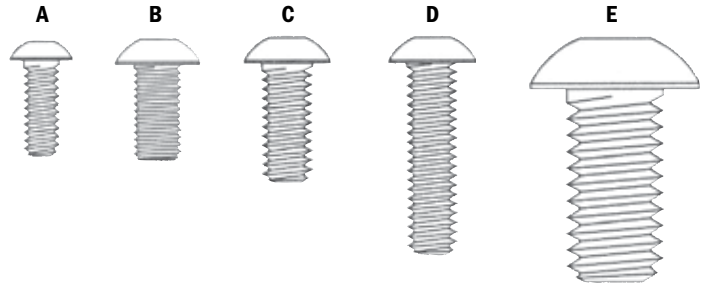
	PART	SUB-SECTION	SIZE	QUANTITY
A	B11007384001BG	3/8-24	3/8-24 x 1	Bag of 10
B	B11007386001BG	3/8-24	3/8-24 x 1 1/4	Bag of 10
C	B11007388001BG	3/8-24	3/8-24 x 1 1/2	Bag of 10



BUTTON HEAD SOCKET CAP SCREWS

#10 - 24; 1/4 - 28; 1/4 - 20; 1/2 - 13; 5/16 - 24

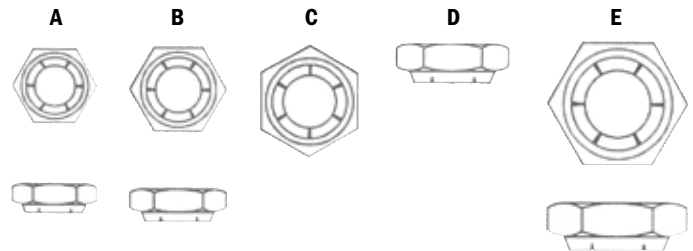
	PART	SUB-SECTION	SIZE	QUANTITY
A	B11006088001BG	#10-24	#10-24 x 1/2	Bag of 10
B	B11006218000BG	1/4-28	1/4-28 x 1/2	Bag of 10
C	B11006180001BG	1/4-20	1/4-20 x 5/8	Bag of 10
D	B11006184001BG	1/4-20	1/4-20 x 1	Bag of 10
E	B11006504001BG	1/2-13	1/2-13 x 1	Bag of 10



HEX NUTS

FLEXLOC

	PART	SUB-SECTION	SIZE	QUANTITY
A	B11170104001BG	FlexLoc	#10-24	Bag of 10
B	B11170106001BG	FlexLoc	1/4-20	Bag of 10
C	B11170108001BG	FlexLoc	5/16-18	Bag of 10
D	B11170109001BG	FlexLoc	5/16-24	Bag of 10
E	B11170110001BG	FlexLoc	3/8-16	Bag of 10

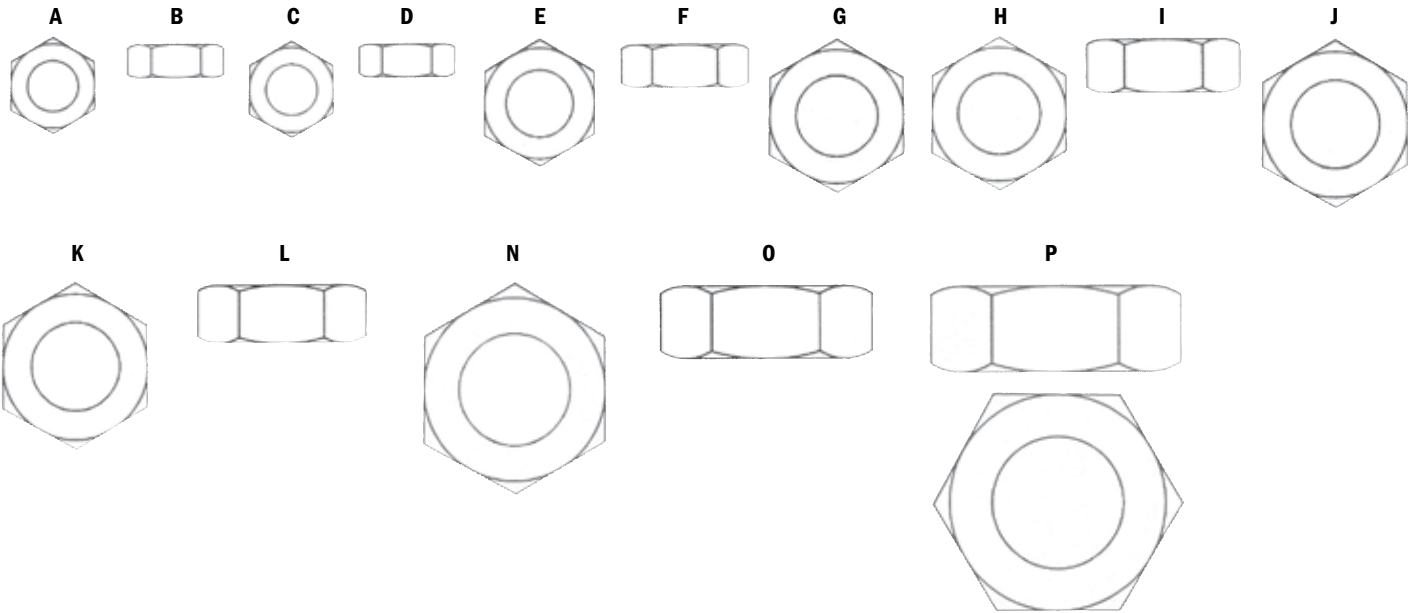


JAM NUTS

PART	SUB-SECTION	SIZE	QUANTITY	
A	B11125200001BG	Jam Nuts	1/4-20 R.H.	Bag of 25
B	B11125250001BG	Jam Nuts	1/4-20 L.H.	Bag of 10
C	B11125201001BG	Jam Nuts	1/4-28 R.H.	Bag of 25
D	B11125251001BG	Jam Nuts	1/4-28 L.H.	Bag of 10
E	B11125204001BG	Jam Nuts	3/18-16 R.H.	Bag of 25
F	B11125254001BG	Jam Nuts	3/8-16 L.H.	Bag of 10
G	B11125206001BG	Jam Nuts	7/16-14 R.H.	Bag of 25
H	B11125207001BG	Jam Nuts	7/16-20 R.H.	Bag of 25

JAM NUTS - CONTINUED

PART	SUB-SECTION	SIZE	QUANTITY	
I	B11125257000BG	Jam Nuts	7/16-20 L.H.	Bag of 10
J	B11125208001BG	Jam Nuts	1/2-13 R.H.	Bag of 25
K	B11125209001BG	Jam Nuts	1/2-20 R.H.	Bag of 25
L	B11125259001BG	Jam Nuts	1/2-20 L.H.	Bag of 10
N	B11125213001BG	Jam Nuts	5/8-18 R.H.	Bag of 25
O	B11125263001BG	Jam Nuts	5/8-18 L.H.	Bag of 10
P	B11125265001BG	Jam Nuts	3/4-16 L.H.	Bag of 10

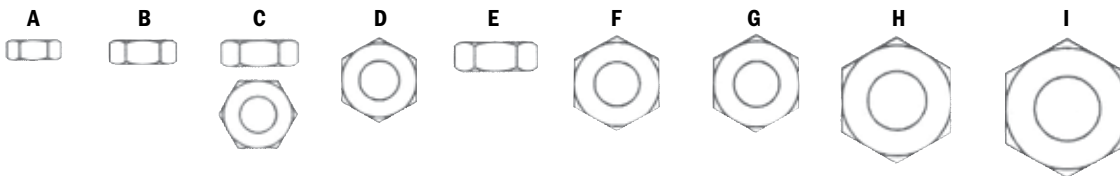


MACHINE SCREW NUTS

PART	SUB-SECTION	SIZE	QUANTITY	
A	B11125000001BG	Machine Screw Nuts	#4-40	Bag of 25
B	B11125001001BG	Machine Screw Nuts	#6-32	Bag of 25
C	B11125003001BG	Machine Screw Nuts	#8-32	Bag of 25
D	B11125004001BG	Machine Screw Nuts	#10-24	Bag of 25
E	B11125005001BG	Machine Screw Nuts	#10-32	Bag of 25

MACHINE SCREW NUTS - CONTINUED

PART	SUB-SECTION	SIZE	QUANTITY	
F	B11125006001BG	Machine Screw Nuts	#12-24	Bag of 25
G	B11125007001BG	Machine Screw Nuts	1/4-20	Bag of 25
H	B11125009001BG	Machine Screw Nuts	5/16-18	Bag of 25
I	B11125011001BG	Machine Screw Nuts	3/8-16	Bag of 25

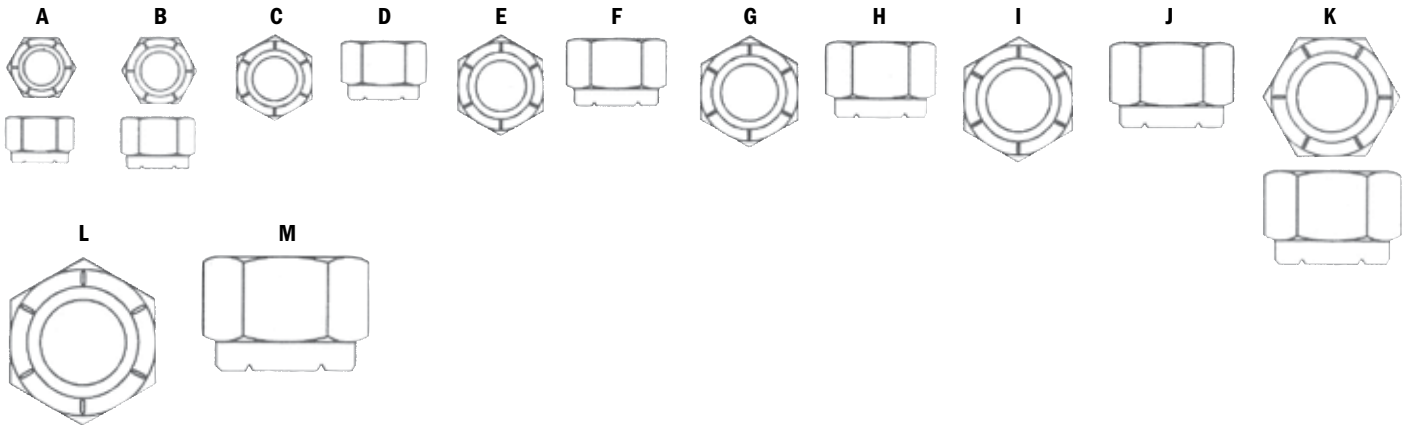


NYLOCK NUTS

PART	SUB-SECTION	SIZE	QUANTITY
A	B11170002001BG	Nylock Nuts #6-32	Bag of 25
B	B11170004001BG	Nylock Nuts #8-32	Bag of 25
C	B11170005001BG	Nylock Nuts #10-24	Bag of 25
D	B11170006001BG	Nylock Nuts #10-32	Bag of 25
E	B11170007001BG	Nylock Nuts 1/4-20	Bag of 25
F	B11170008001BG	Nylock Nuts 1/4-28	Bag of 25
G	B11170009001BG	Nylock Nuts 5/16-18	Bag of 25

NYLOCK NUTS - CONTINUED

PART	SUB-SECTION	SIZE	QUANTITY
H	B11170010001BG	Nylock Nuts 5/16-24	Bag of 25
I	B11170011001BG	Nylock Nuts 3/8-16	Bag of 25
J	B11170012001BG	Nylock Nuts 3/8-24	Bag of 25
K	B11170014001BG	Nylock Nuts 7/16-20	Bag of 25
L	B11170015001BG	Nylock Nuts 1/2-13	Bag of 25
M	B11170016001BG	Nylock Nuts 1/2-20	Bag of 25

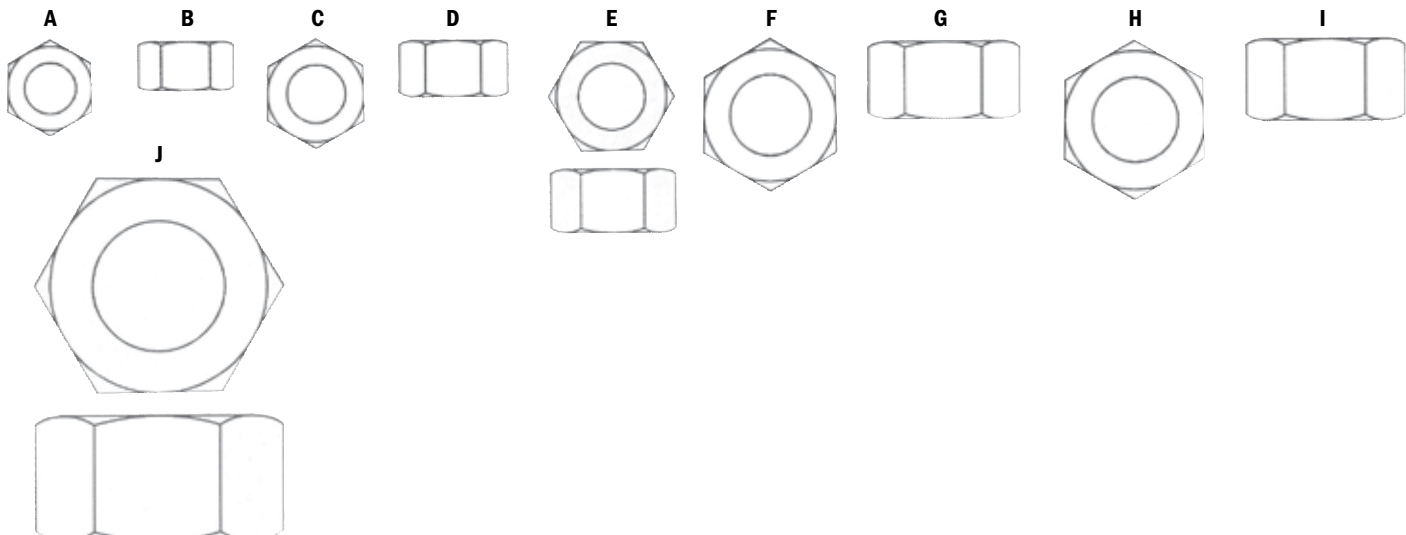


STANDARD HEX NUTS

PART	SUB-SECTION	SIZE	QUANTITY
A	B11125100001BG	Standard Hex Nuts 1/4-20	Bag of 25
B	B11125101001BG	Standard Hex Nuts 1/4-28	Bag of 25
C	B11125102001BG	Standard Hex Nuts 5/16-18	Bag of 25
D	B11125103001BG	Standard Hex Nuts 5/16-24	Bag of 25
E	B11125104001BG	Standard Hex Nuts 3/8-16	Bag of 25

STANDARD HEX NUTS - CONTINUED

PART	SUB-SECTION	SIZE	QUANTITY
F	B11125106001BG	Standard Hex Nuts 7/16-14	Bag of 25
G	B11125107001BG	Standard Hex Nuts 7/16-20	Bag of 25
H	B11125108001BG	Standard Hex Nuts 1/2-13	Bag of 25
I	B11125109001BG	Standard Hex Nuts 1/2-20	Bag of 25
J	B11125115001BG	Standard Hex Nuts 3/4-16	Bag of 25



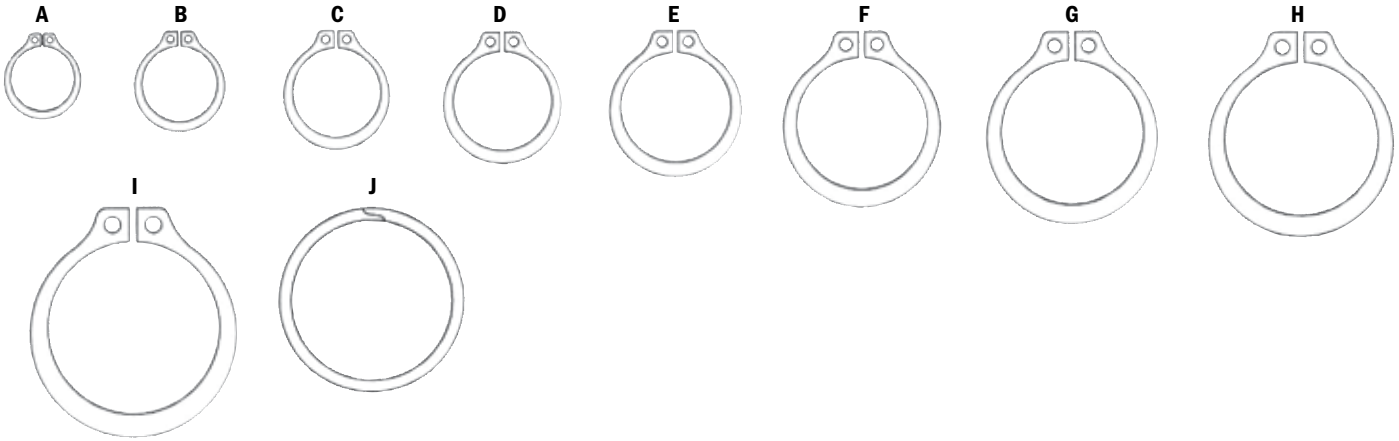
RETAINING RINGS

EXTERNAL

PART	SUB-SECTION	SIZE	QUANTITY
A	B11530012001BG	External	Bag of 20
B	B11530015001BG	External	Bag of 20
C	B11530017001BG	External	Bag of 20
D	B11530019001BG	External	Bag of 20
E	B11530021001BG	External	Bag of 20

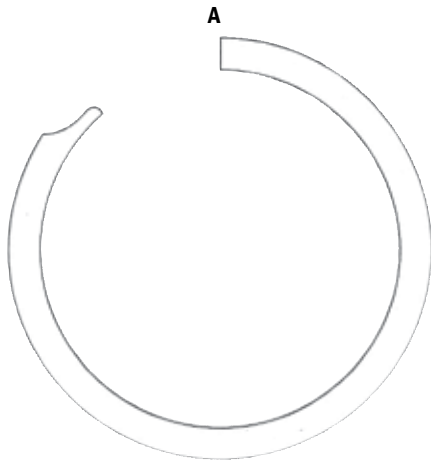
EXTERNAL & EXTERNAL SPIROL - CONTINUED

PART	SUB-SECTION	SIZE	QUANTITY
F	B11530025001BG	External	Bag of 20
G	B11530027001BG	External	Bag of 20
H	B11530028001BG	External	Bag of 20
I	B11530030001BG	External	Bag of 20
J	B11533512001BG	External Spirol	Bag of 20



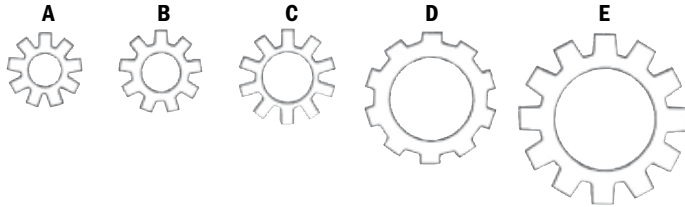
INTERNAL & INTERNAL SPIROL

PART	SUB-SECTION	SIZE	QUANTITY
A	B11536026001BG	Internal Spirol	Bag of 20



EXTERNAL TOOTH

	PART	SUB-SECTION	SIZE	QUANTITY
A	B11198002001BG	External Tooth	#8	Bag of 25
B	B11198003001BG	External Tooth	#10	Bag of 25
C	B11198005001BG	External Tooth	1/4	Bag of 25
D	B11198007001BG	External Tooth	3/8	Bag of 25
E	B11198009001BG	External Tooth	1/2	Bag of 25



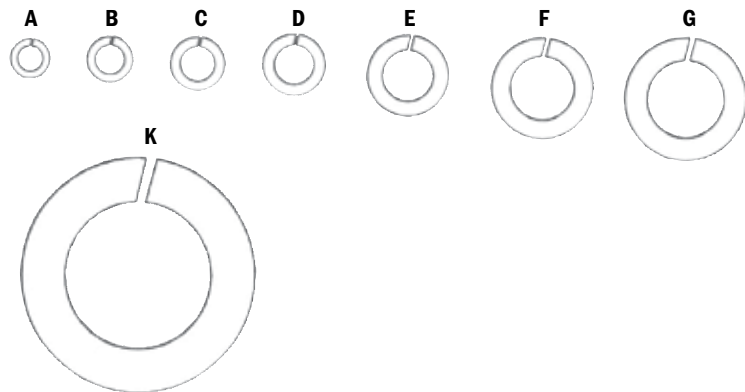
HI-COLLAR SPLIT

	PART	SUB-SECTION	SIZE	QUANTITY
A	B11196008001BG	Hi-Collar Split	#10	Bag of 25



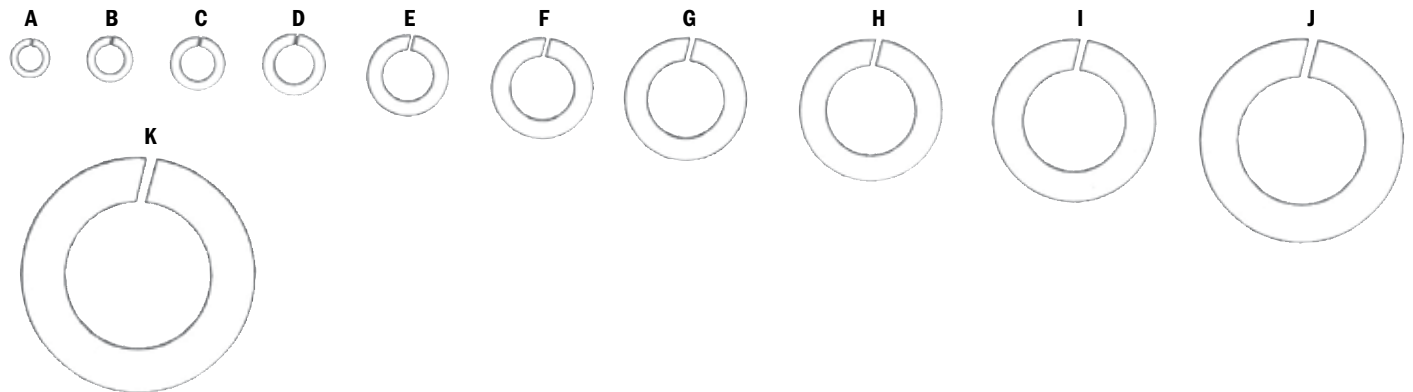
SPLIT

	PART	SUB-SECTION	SIZE	QUANTITY
A	B11195004001BG	Split	#4	Bag of 25
B	B11195006001BG	Split	#6	Bag of 25
C	B11195008001BG	Split	#8	Bag of 25
D	B11195010001BG	Split	#10	Bag of 25
E	B11195014001BG	Split	1/4	Bag of 25



SPLIT - CONTINUED

	PART	SUB-SECTION	SIZE	QUANTITY
F	B11195015001BG	Split	5/16	Bag of 25
G	B11195016001BG	Split	3/8	Bag of 25
H	B11195017001BG	Split	7/16	Bag of 25
I	B11195018001BG	Split	1/2	Bag of 25
J	B11195020001BG	Split	5/8	Bag of 25
K	B11196012001BG	Split	1/4	Bag of 25



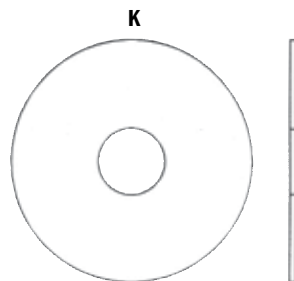
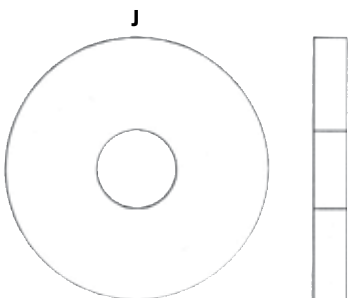
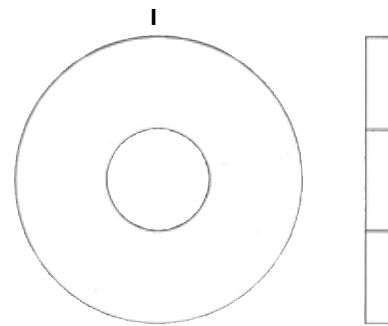
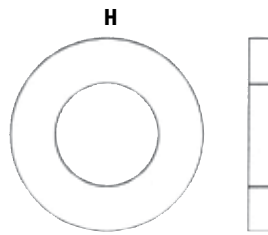
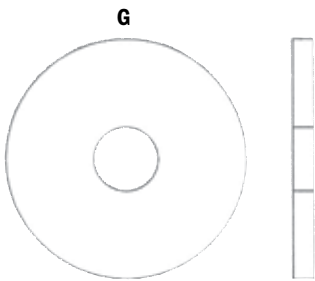
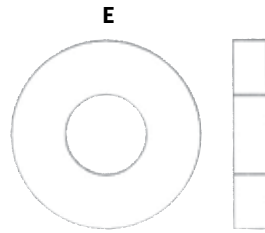
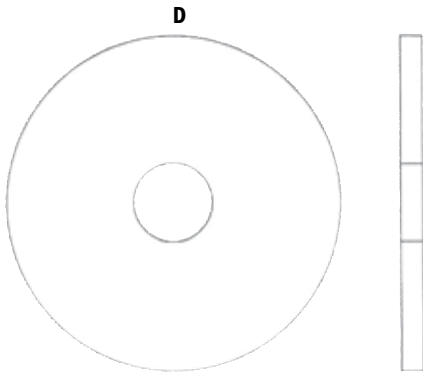
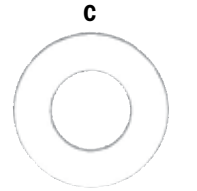
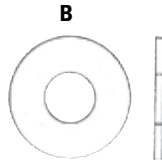
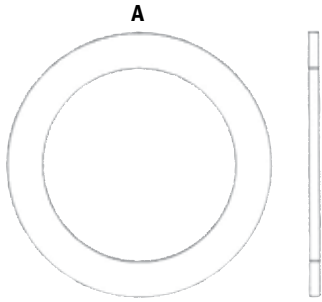
FLAT WASHERS

NON - STANDARD

PART	SUB-SECTION	SIZE	QUANTITY
A	B10191557000BG	Non-Standard	Bag of 25
B	B11190509001BG	Non-Standard	Bag of 25
C	B11190511001BG	Non-Standard	Bag of 25
D	B11190512001BG	Non-Standard	Bag of 25
E	B11190514001BG	Non-Standard	Bag of 25

NON - STANDARD - CONTINUED

PART	SUB-SECTION	SIZE	QUANTITY
G	B11190519001BG	Non-Standard	Bag of 25
H	B11190520001BG	Non-Standard	Bag of 25
I	B11190521001BG	Non-Standard	Bag of 25
J	B11190522001BG	Non-Standard	Bag of 25
K	B11190527001BG	Non-Standard	Bag of 25

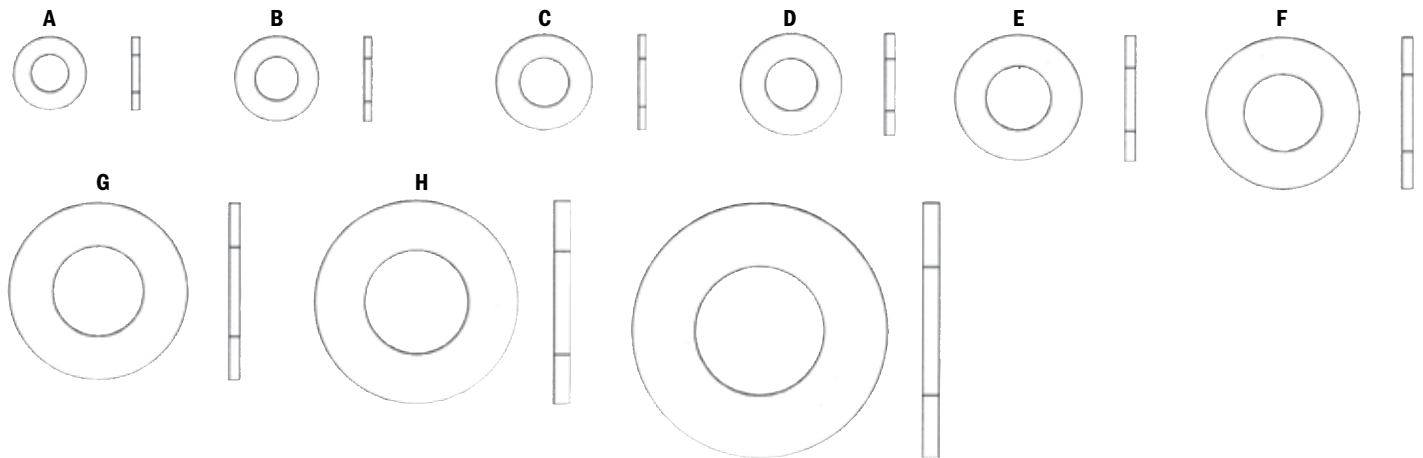


SAE

PART	SUB-SECTION	SIZE	QUANTITY
A	B11190002001BG	SAE #6	Bag of 25
B	B11190004001BG	SAE #8	Bag of 25
C	B11190006001BG	SAE #10	Bag of 25
D	B11190010001BG	SAE 1/4	Bag of 25
E	B11190012001BG	SAE 5/16	Bag of 25

SAE- CONTINUED

PART	SUB-SECTION	SIZE	QUANTITY
F	B11190014001BG	SAE 3/8	Bag of 25
G	B11190016001BG	SAE 7/16	Bag of 25
H	B11190018001BG	SAE 1/2	Bag of 25
I	B11190022001BG	SAE 5/8	Bag of 25

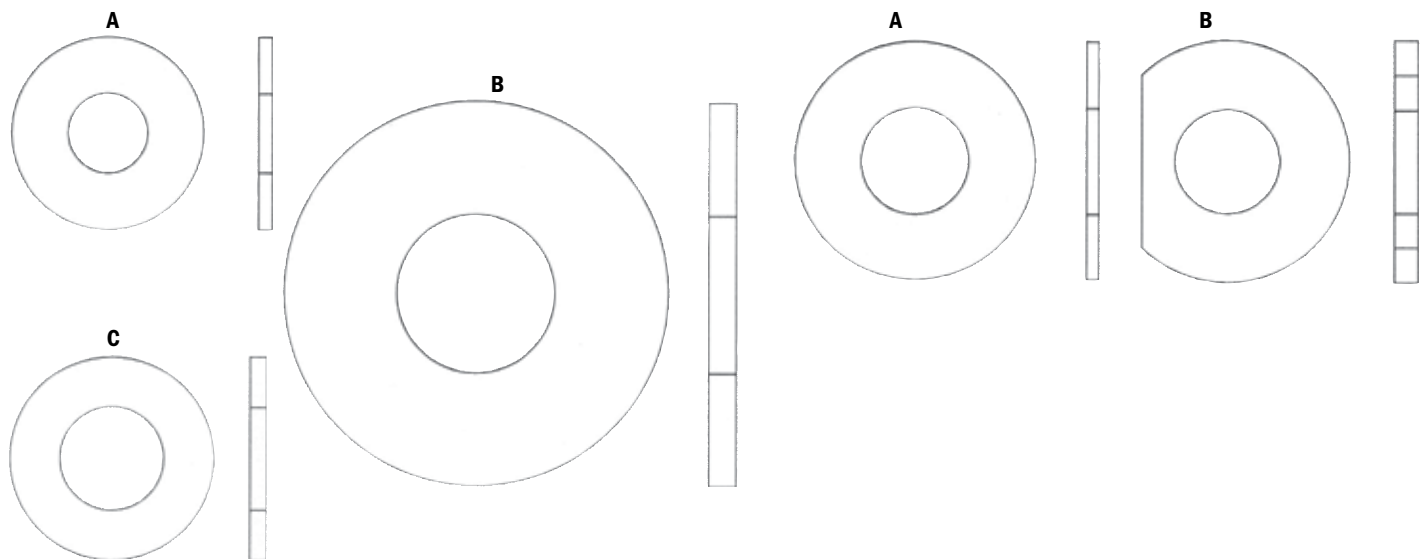


USS

PART	SUB-SECTION	SIZE	QUANTITY
A	B11191014001BG	USS 3/8	Bag of 25
B	B11191024001BG	USS 3/4	Bag of 25
C	B11191018001BG	USS 1/2	Bag of 25

SPECIALIZED

PART	SUB-SECTION	SIZE	QUANTITY
A	B12250076002BG	Specialized Fiber Washer	Bag of 25
B	B12252360000BG	Specialized D Washer	Bag of 5



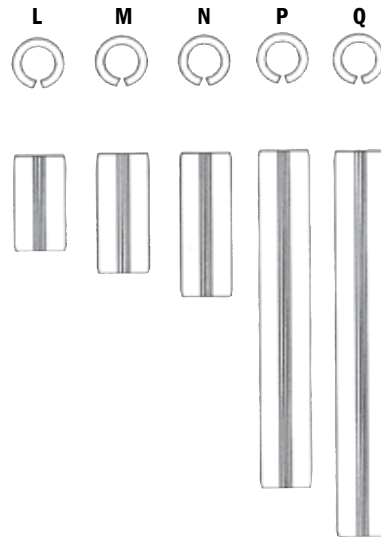
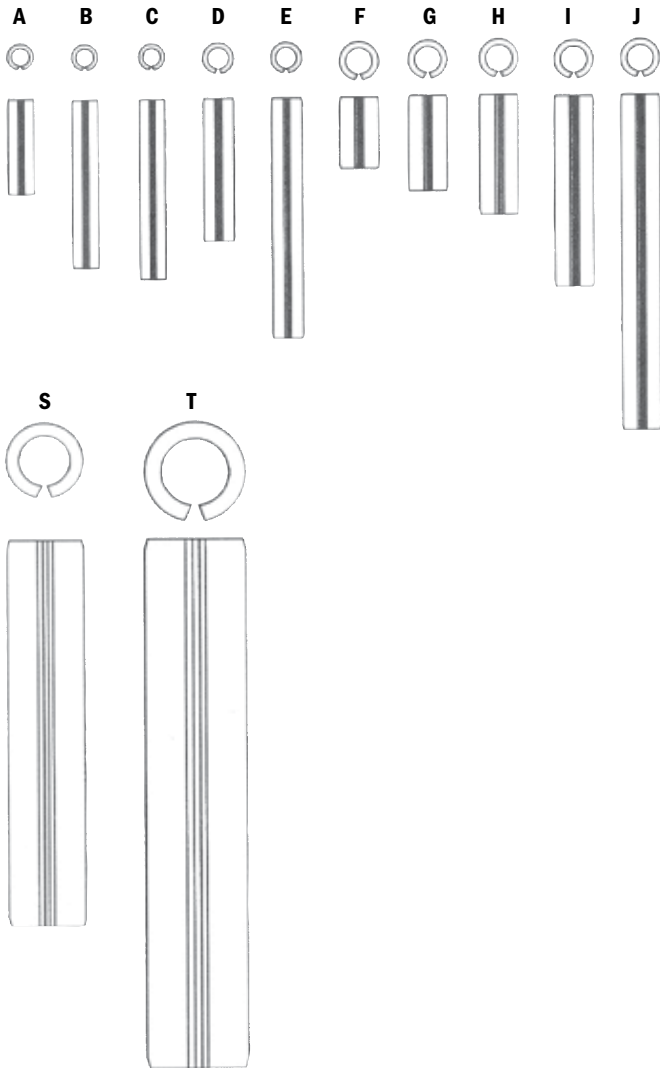
ROLL PINS

ROLL PINS

PART	SIZE	QUANTITY
A B11345154000BG	1/8 x 1/2	Bag of 20
B B11345160001BG	1/8 x 7/8	Bag of 20
C B11345161001BG	1/8 x 15/16	Bag of 20
D B11345258001BG	5/32 x 3/4	Bag of 20
E B11345264000BG	5/32 x 1 1/4	Bag of 20
F B11345302001BG	3/16 x 3/8	Bag of 20
G B11345304000BG	3/16 x 1/2	Bag of 20
H B11345306000BG	3/16 x 5/8	Bag of 20
I B11345312000BG	3/16 x 1	Bag of 20

ROLL PINS - CONTINUED

PART	SIZE	QUANTITY
J B11345318000BG	3/16 x 1 3/4	Bag of 20
L B11345404000BG	1/4 x 1/2	Bag of 20
M B11345406000BG	1/4 x 5/8	Bag of 20
N B11345408001BG	1/4 x 3/4	Bag of 20
P B11345418001BG	1/4 x 1 3/4	Bag of 20
Q B11345420001BG	1/4 x 2	Bag of 20
S B11345520001BG	3/8 x 2	Bag of 20
T B11345573000BG	1/2 x 2 3/4	Bag of 20

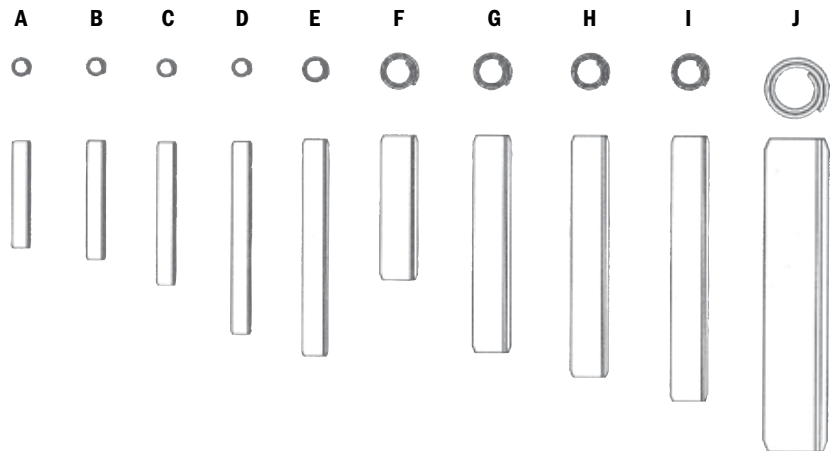


SPIROL PINS

	PART	SIZE	QUANTITY
A	B11360257000BG	3/32 x 9/16	Bag of 20
B	B11360258001BG	3/32 x 5/8	Bag of 20
C	B11360260000BG	3/32 x 3/4	Bag of 20
D	B11360264000BG	3/32 x 1	Bag of 20
E	B11360365001BG	1/8 x 1 1/8	Bag of 20

SPIROL PINS - CONTINUED

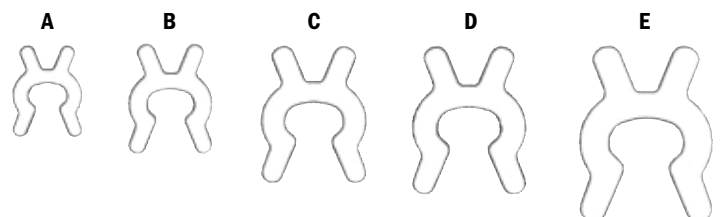
	PART	SIZE	QUANTITY
F	B11360460000BG	3/16 x 3/4	Bag of 20
G	B11360465000BG	3/16 x 1 1/8	Bag of 20
H	B11360466000BG	3/16 x 1 1/4	Bag of 20
I	B11361315000BG	3/16 x 1 3/8	Bag of 20
J	B11360619000BG	5/16 x 1 5/8	Bag of 20



X-WASHERS

X-WASHERS

	PART	QUANTITY
A	B11230000001BG	Bag of 25
B	B11230001001BG	Bag of 25
C	B11230002001BG	Bag of 25
D	B11230003001BG	Bag of 25
E	B11230005001BG	Bag of 25



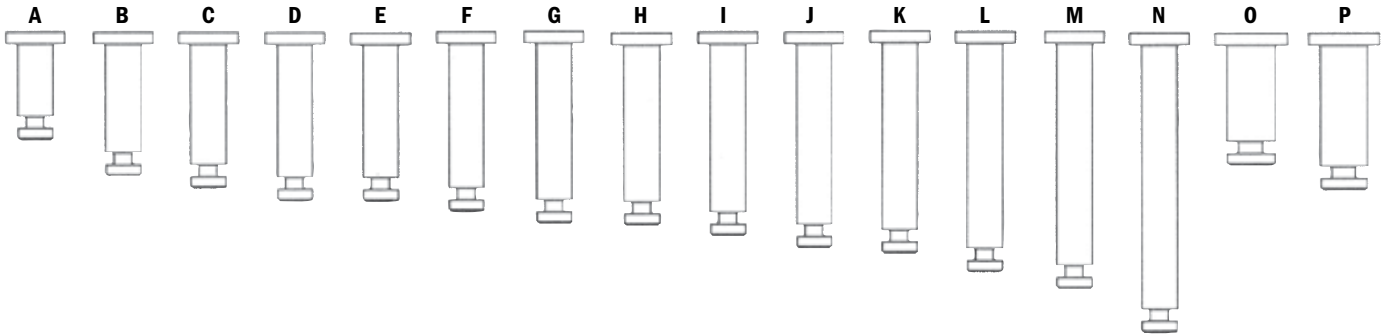
X-WASHER PINS

X-WASHER PINS

	PART	QUANTITY
A	B12100166002BG	Bag of 5
B	B12100166004BG	Bag of 5
C	B12100166005BG	Bag of 5
D	B12150158013BG	Bag of 5
E	B12100166006BG	Bag of 5
F	B12100166024BG	Bag of 5
G	B12100166022BG	Bag of 5
H	B12100166008BG	Bag of 5

X-WASHER PINS - CONTINUED

	PART	QUANTITY
I	B12100166026BG	Bag of 5
J	B12100166025BG	Bag of 5
K	B12150158007BG	Bag of 5
L	B12150158006BG	Bag of 5
M	B12150158012BG	Bag of 5
N	B12100166019BG	Bag of 5
O	B12100166009BG	Bag of 5
P	B12100166011BG	Bag of 5

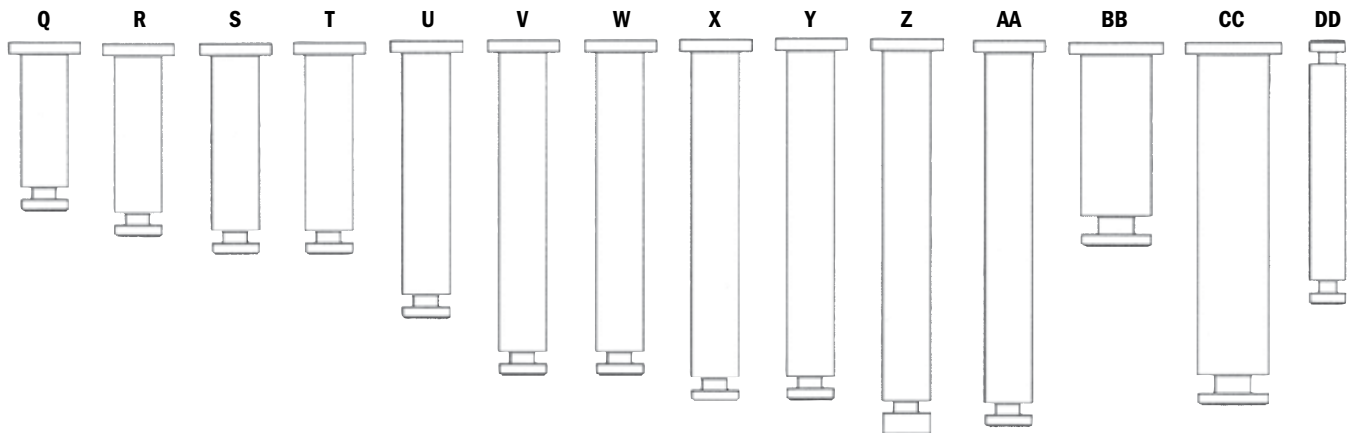


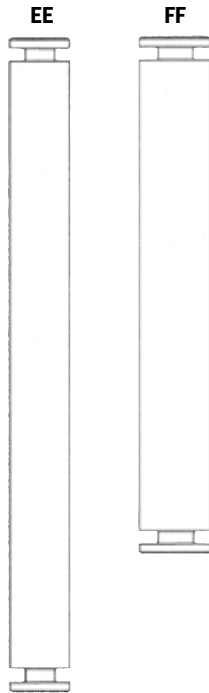
X-WASHER PINS - CONTINUED

	PART	QUANTITY
Q	B12250010011BG	Bag of 5
R	B12100166027BG	Bag of 5
S	B12100166007BG	Bag of 5
T	B12100166013BG	Bag of 5
U	B12100166014BG	Bag of 5
V	B12100166015BG	Bag of 5
W	B12150158015BG	Bag of 5

X-WASHER PINS - CONTINUED

	PART	QUANTITY
X	B12100166016BG	Bag of 5
Y	B12100166017BG	Bag of 5
Z	B12100166032BG	Bag of 5
AA	B12150158017BG	Bag of 5
BB	B12150158014BG	Bag of 2
CC	B12150158016BG	Bag of 2
DD	B12150023007BG	Bag of 5





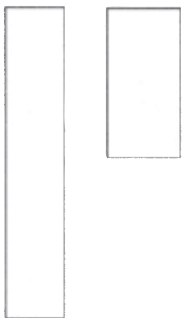
X-WASHER PINS - CONTINUED

	PART	QUANTITY
EE	B12450006002BG	Bag of 5
FF	B12150023002BG	Bag of 5

MACHINE KEYS

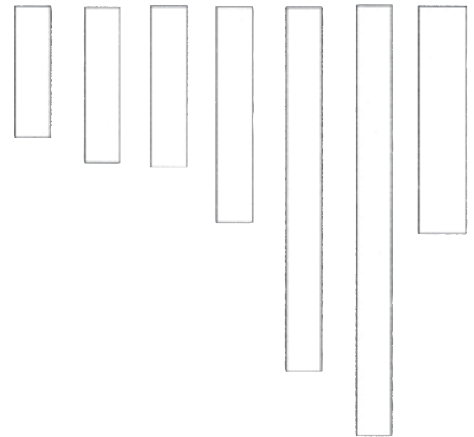
RECTANGULAR KEYS

	PART	SIZE	QUANTITY
A	B12100164000BG	Rectangular	Bag of 5
B	B12400138008BG	Rectangular	Bag of 5



SQUARE KEYS

	PART	SIZE	QUANTITY
A	B12100187009BG	Square	Bag of 5
B	B12400138007BG	Square	Bag of 5
C	B12400138002BG	Square	Bag of 5
D	B12400138006BG	Square	Bag of 5
E	B12400138004BG	Square	Bag of 5
F	B12100187011BG	Square	Bag of 5
G	B12400138003BG	Square	Bag of 5



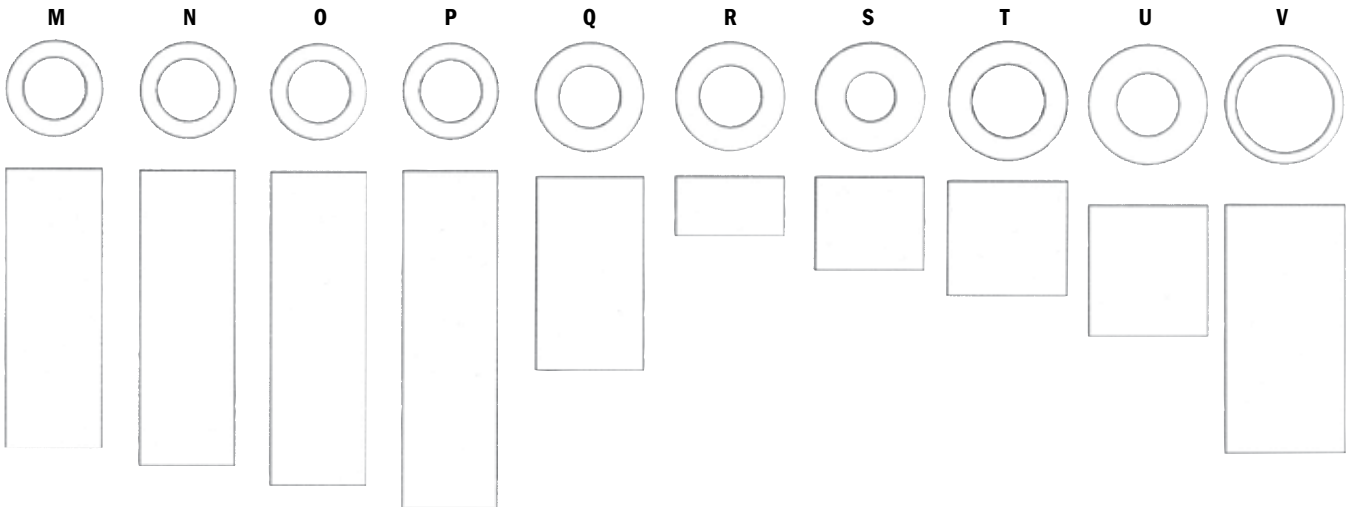
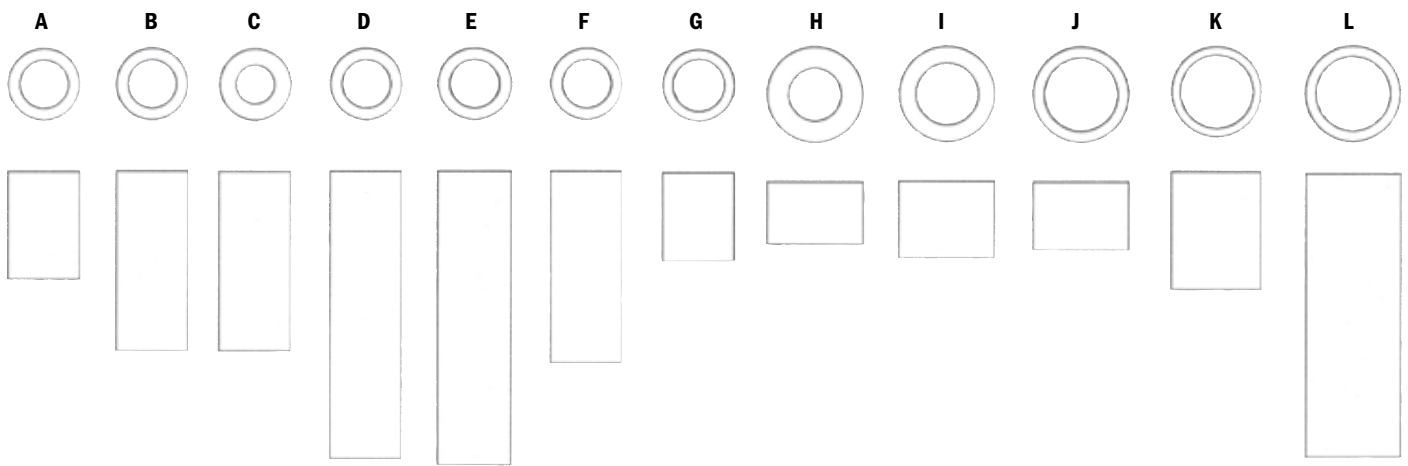
STEEL SPACERS & BUSHINGS

STEEL SPACERS & BUSHINGS

PART	QUANTITY
A B12100185021BG	Bag of 2
B B12100030005BG	Bag of 2
C B12100030002BG	Bag of 2
D B10386062000BG	Bag of 2
E B12100185022BG	Bag of 2
F B12250183005BG	Bag of 2
G B12200047003BG	Bag of 2
H B12100896000BG	Bag of 2
I B12250011012BG	Bag of 2
J B12400018005BG	Bag of 2
K B12400018004BG	Bag of 2

STEEL SPACERS & BUSHINGS - CONTINUED

PART	QUANTITY
L B12250011003BG	Bag of 2
M B12250011021BG	Bag of 2
N B12250011020BG	Bag of 2
O B12250011014BG	Bag of 2
P B12250011011BG	Bag of 2
Q B12250011019BG	Bag of 2
R B12150125000BG	Bag of 2
S B12100185020BG	Bag of 2
T B12252349000BG	Bag of 2
U B12100185023BG	Bag of 2
V B12250011002BG	Bag of 2

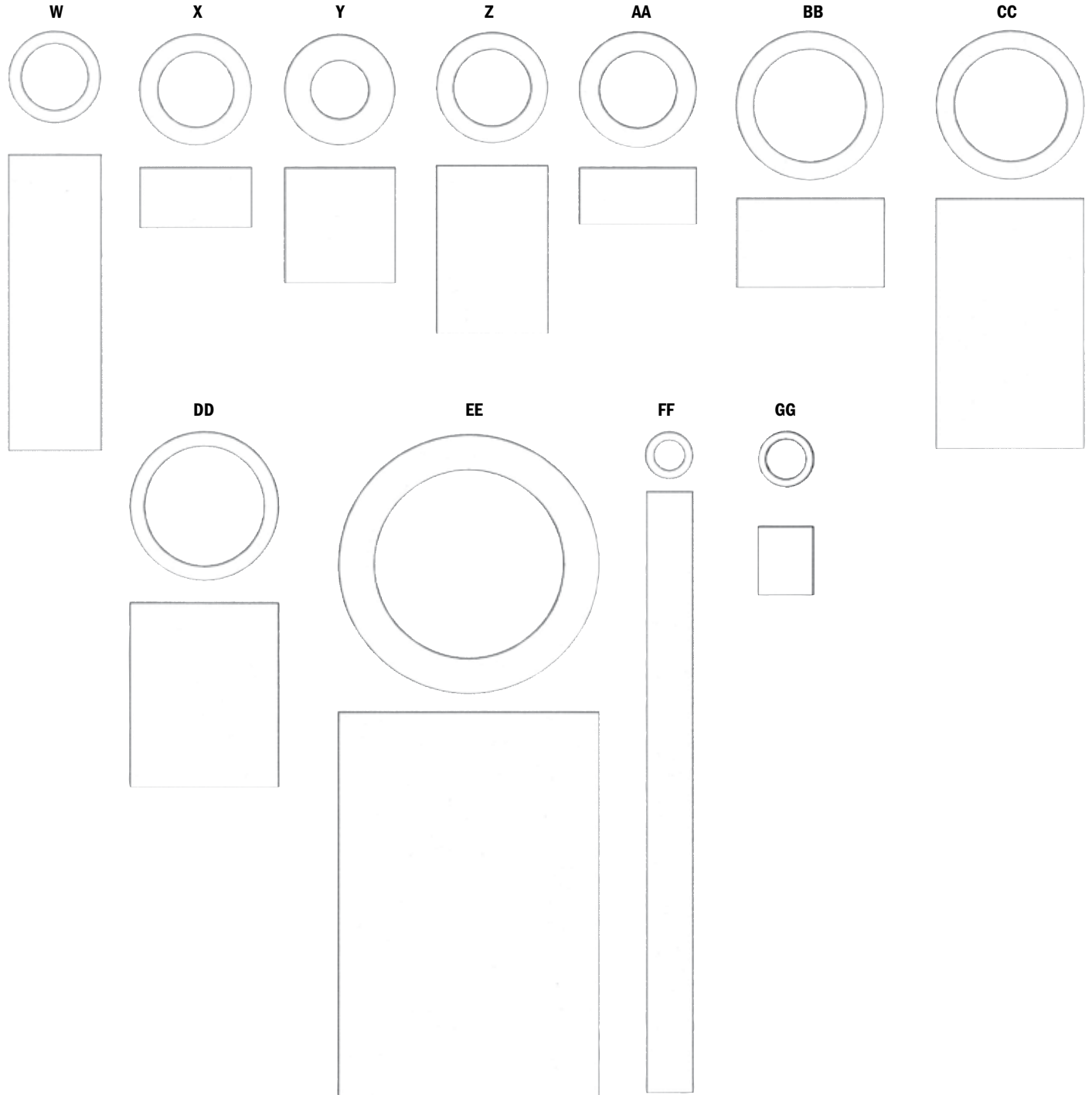


STEEL SPACERS & BUSHINGS - CONTINUED

PART	QUANTITY
W B12400018023BG	Bag of 2
X B12400018008BG	Bag of 2
Y B10386092000BG	Bag of 2
Z B12100185036BG	Bag of 2
AA B12252350000BG	Bag of 2

STEEL SPACERS & BUSHINGS - CONTINUED

PART	QUANTITY
BB B12400018007BG	Bag of 2
CC B12400018002BG	Bag of 2
DD B12150217000	Qty. 1
EE B12400289000	Qty. 1
FF B12150267000BG	Bag of 2
GG B112200047003BG	Bag of 2



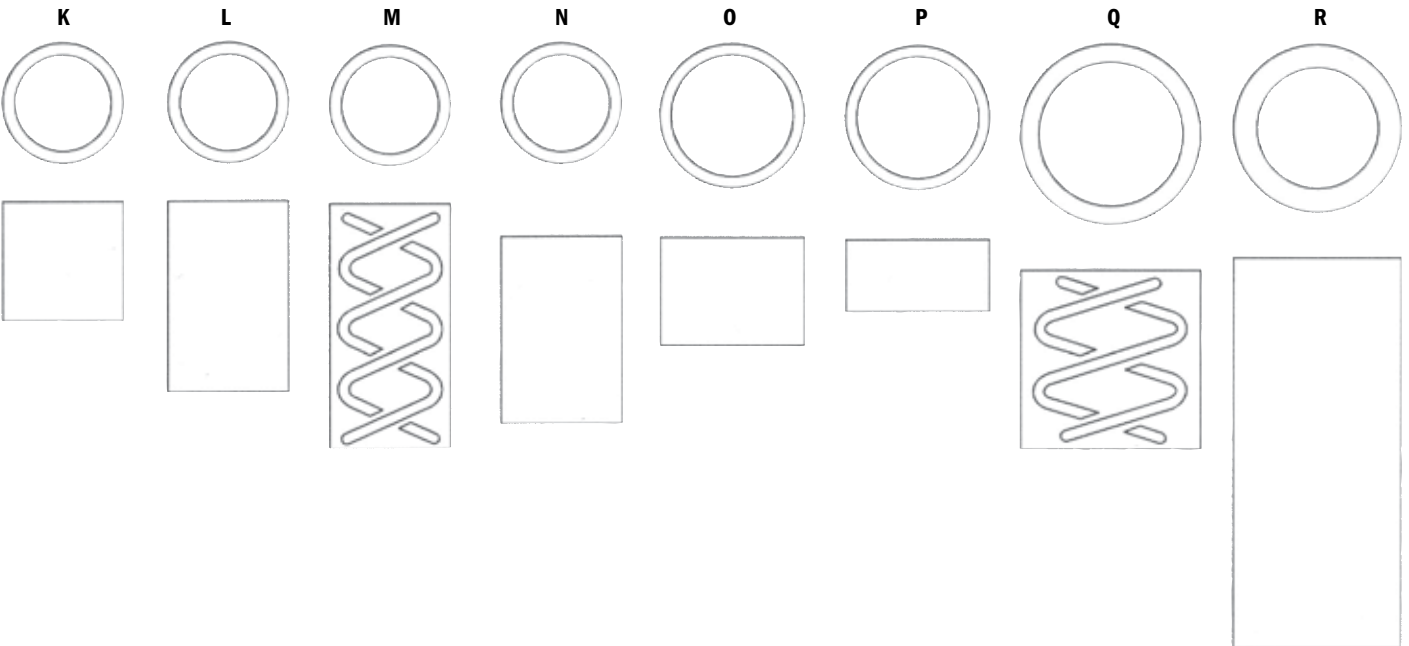
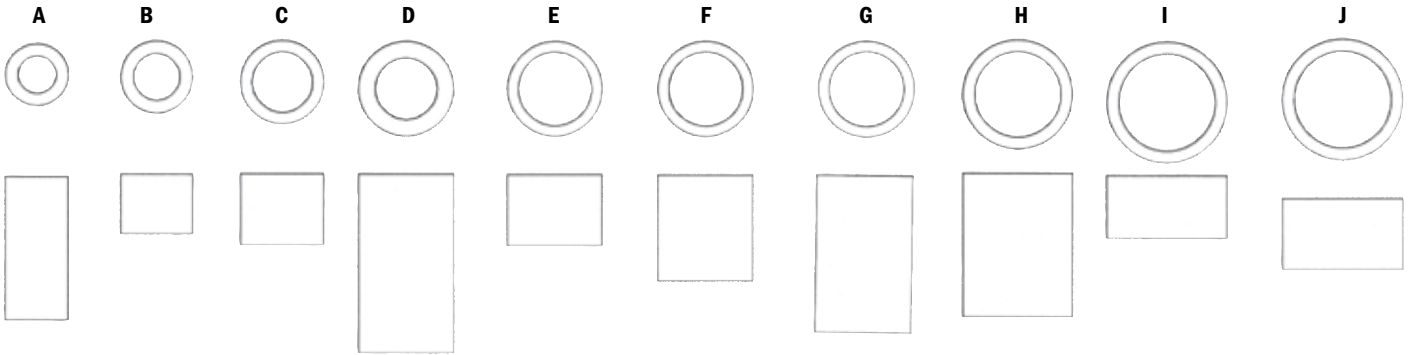
SLEEVE OILITE BEARINGS

SLEEVE OILITE BEARINGS

PART	QUANTITY
A B1142000000BG	Bag of 5
B B12150190000BG	Bag of 5
C B11420043000BG	Bag of 5
D B11423000000BG	Bag of 5
E B11420007000BG	Bag of 5
F B11420097000BG	Bag of 5
G B12250091000BG	Bag of 5
H B11420008000BG	Bag of 5
I B12100334000BG	Bag of 5

SLEEVE OILITE BEARINGS - CONTINUED

PART	QUANTITY
J B11420009000BG	Bag of 5
K B11420015000BG	Bag of 5
L B11420095000BG	Bag of 5
M B12250075000BG	Bag of 5
N B11420102000BG	Bag of 5
O B11420094000BG	Bag of 5
P B11420019000BG	Bag of 5
Q B10424001000BG	Bag of 2
R B11420054000BG	Bag of 5

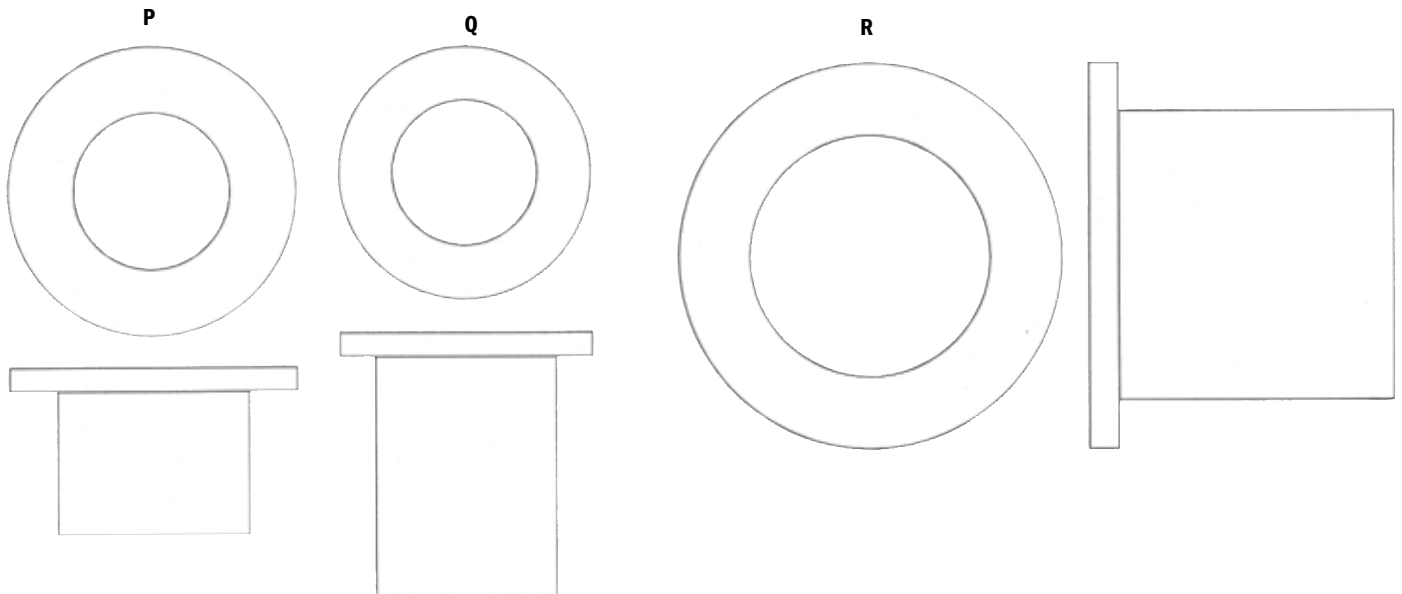
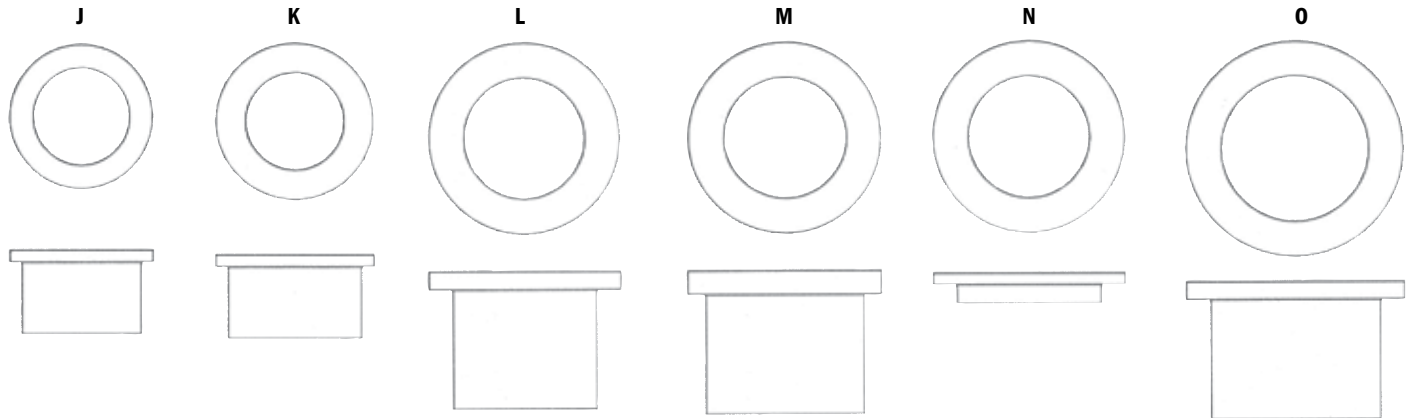
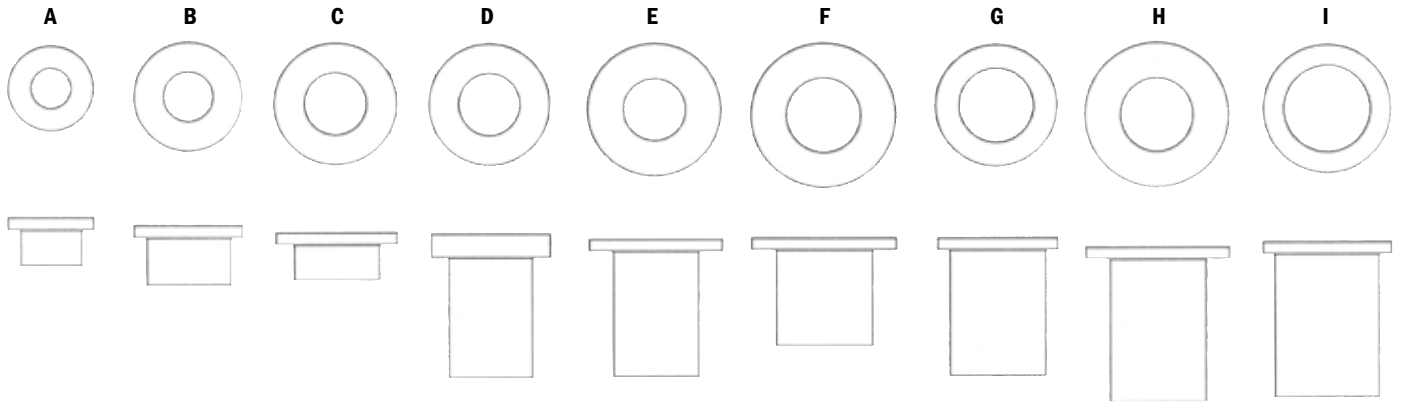


SLEEVE OILITE BEARINGS

	PART	QUANTITY
A	B11421061000BG	Bag of 5
B	B11421045000BG	Bag of 5
C	B12200105000BG	Bag of 5
D	B11421004000BG	Bag of 5
E	B11421053000BG	Bag of 5
F	B11421048000BG	Bag of 5
G	B11421008000BG	Bag of 5
H	B12150255000BG	Bag of 5
I	B11421065000BG	Bag of 5

SLEEVE OILITE BEARINGS - CONTINUED

	PART	QUANTITY
J	B11421110000BG	Bag of 5
K	B11421017000BG	Bag of 5
L	B11421019000BG	Bag of 5
M	B11421058000BG	Bag of 5
N	B12200104000BG	Bag of 5
O	B10421901000BG	Bag of 2
P	B11421109000BG	Bag of 2
Q	B11421041000BG	Bag of 2
R	B12400199000BG	Bag of 2



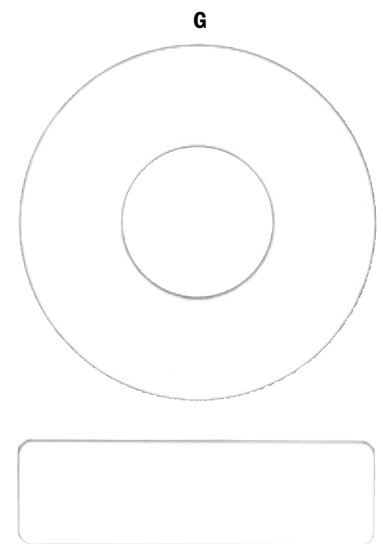
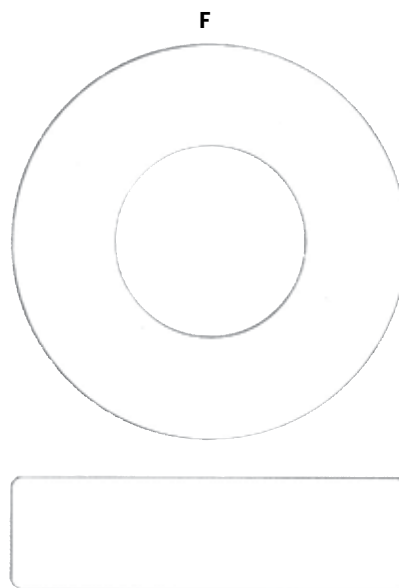
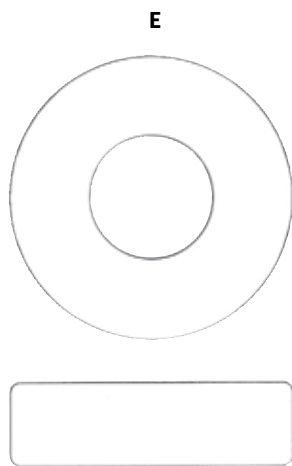
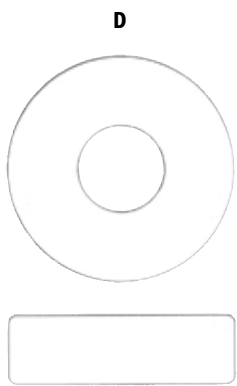
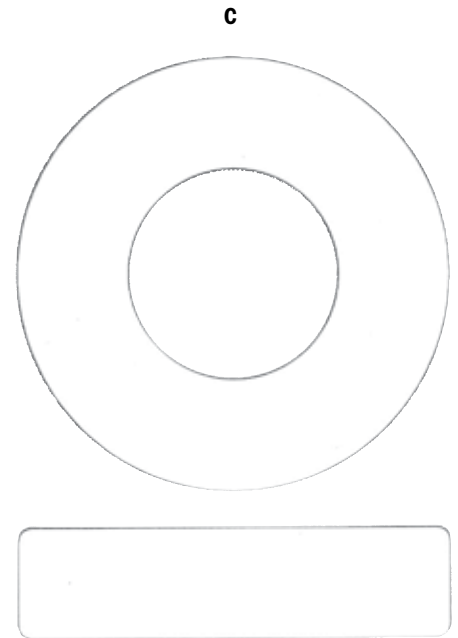
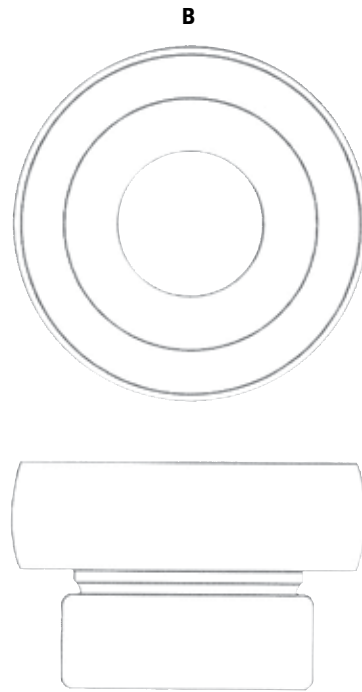
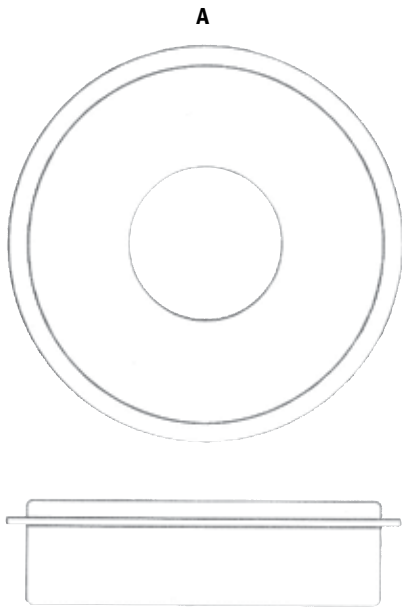
BALL BEARINGS

BALL BEARINGS

	PART	QUANTITY
A	B10430001000	Qty. 1
B	B11413001000	Qty. 1
C	785502065	Qty. 1
D	B11430004000	Qty. 1

BALL BEARINGS - CONTINUED

	PART	QUANTITY
E	B11430007000	Qty. 1
F	B11430013000	Qty. 1
G	000024590	Qty. 1

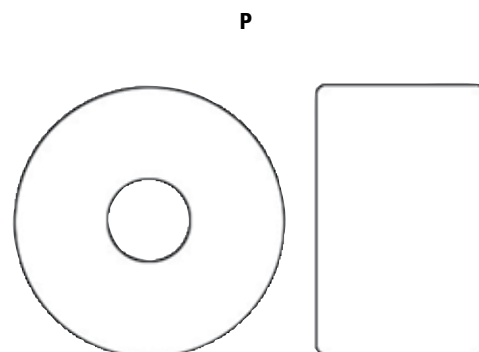
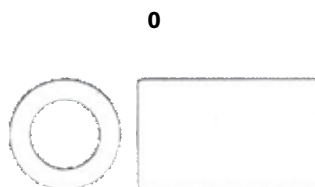
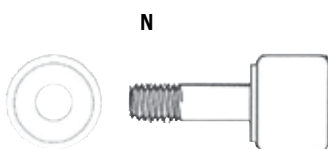
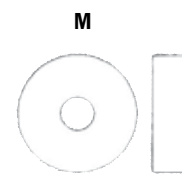
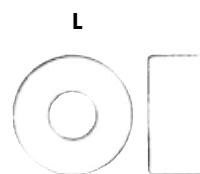
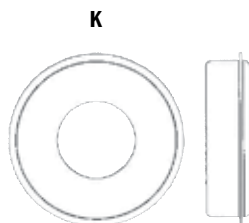
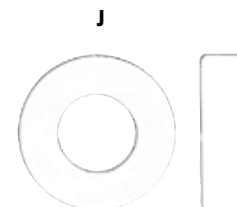
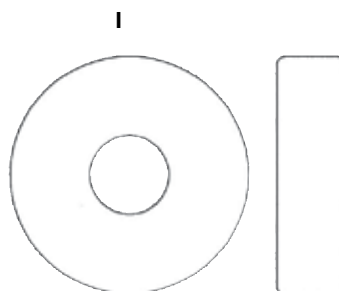
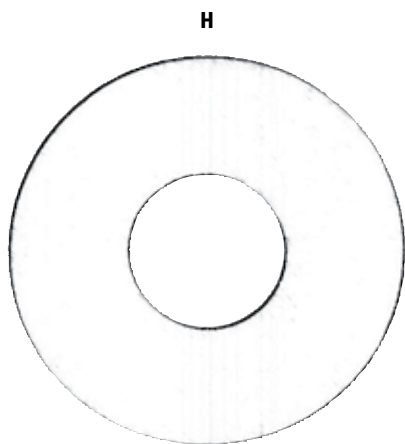


BALL BEARINGS - CONTINUED

	PART	QUANTITY
H	B11430016000	Qty. 1
I	000026874	Qty. 1
J	B11431006000	Qty. 1
K	B11431010000	Qty. 1
L	B11432000000	Qty. 1

BALL BEARINGS - CONTINUED

	PART	QUANTITY
M	B11433000000	Qty. 1
N	B11437000000	Qty. 1
O	B11450201000	Qty. 1
P	B11450301000	Qty. 1

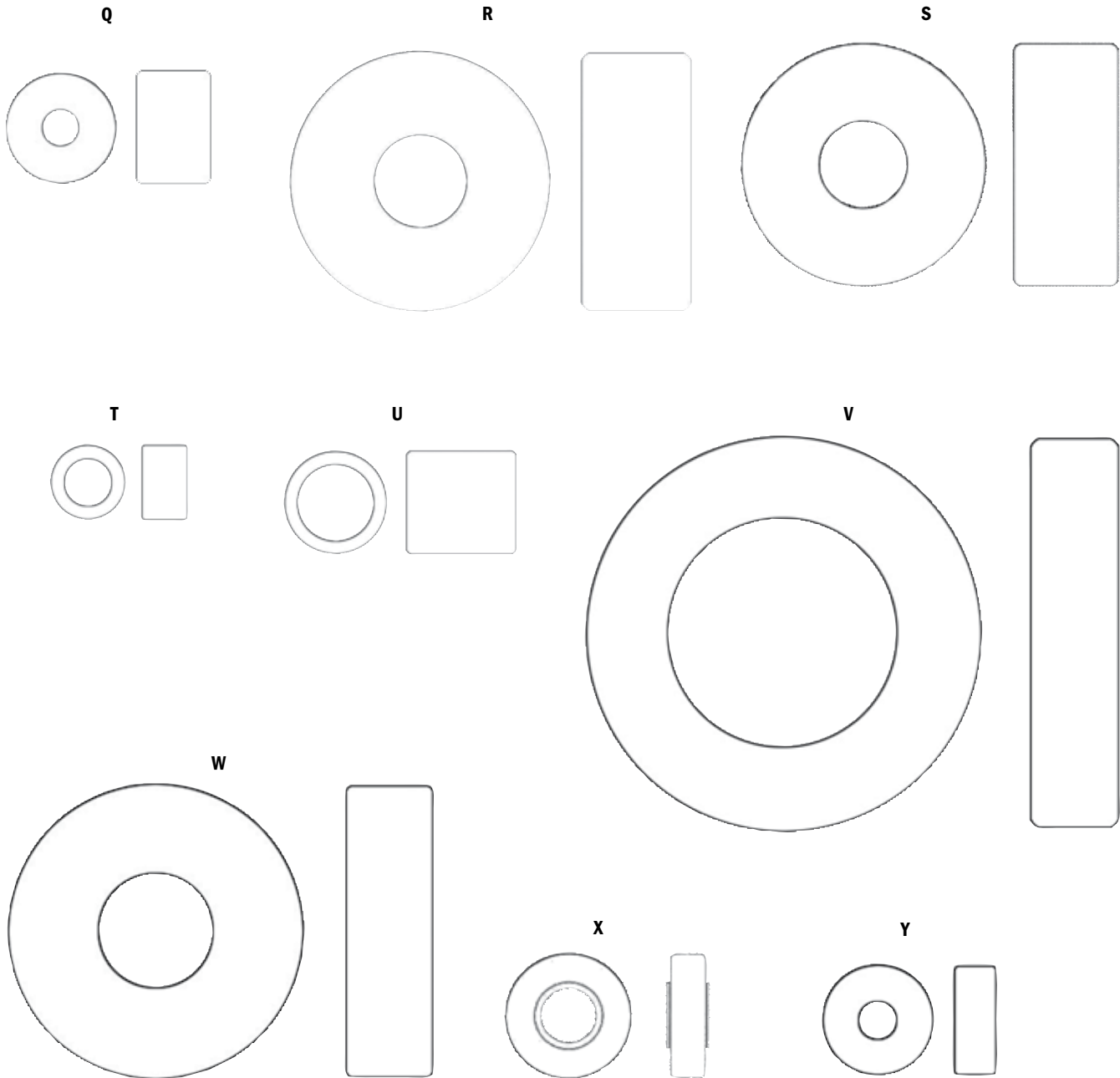


BALL BEARINGS - CONTINUED

	PART	QUANTITY
Q	B11450303000	Qty. 1
R	B11460000000	Qty. 1
S	B11461000000	Qty. 1
T	B11483000000	Qty. 1
U	B11483001000	Qty. 1

BALL BEARINGS - CONTINUED

	PART	QUANTITY
V	B11490001000	Qty. 1
W	B11491000000	Qty. 1
X	B11500001000	Qty. 1
Y	B12862171000	Qty. 1



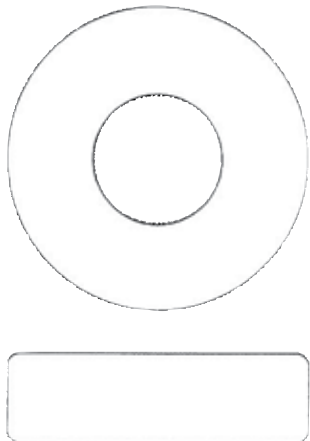
BALL BEARINGS - CONTINUED

	PART	QUANTITY
Z	701021010	Qty. 1
AA	250001041	Qty. 1
BB	701019007	Qty. 1

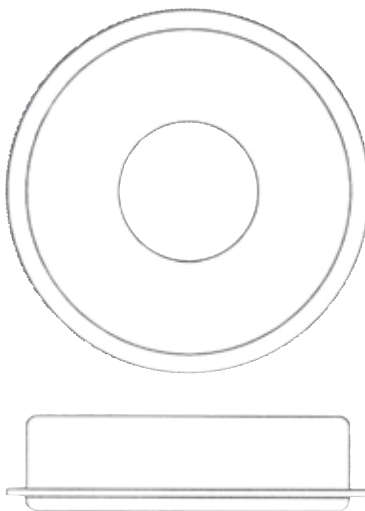
BALL BEARINGS - CONTINUED

	PART	QUANTITY
CC	701013019	Qty. 1
DD	701000039	Qty. 1
EE	B11432002000	Qty. 1

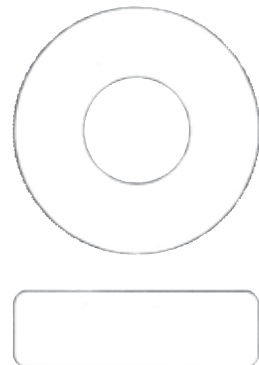
Z



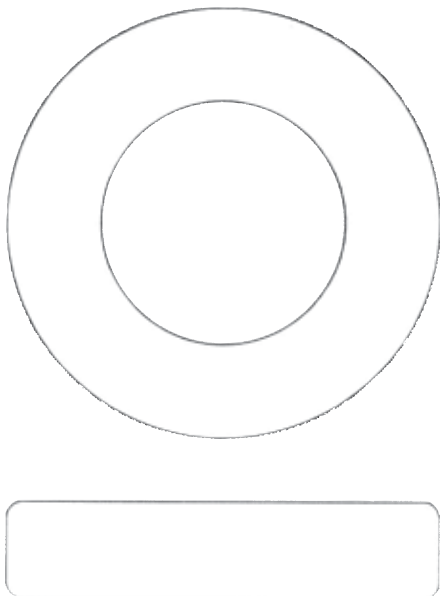
AA



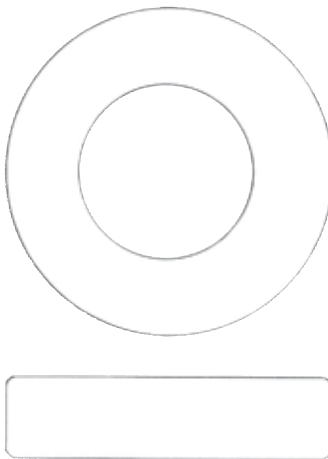
BB



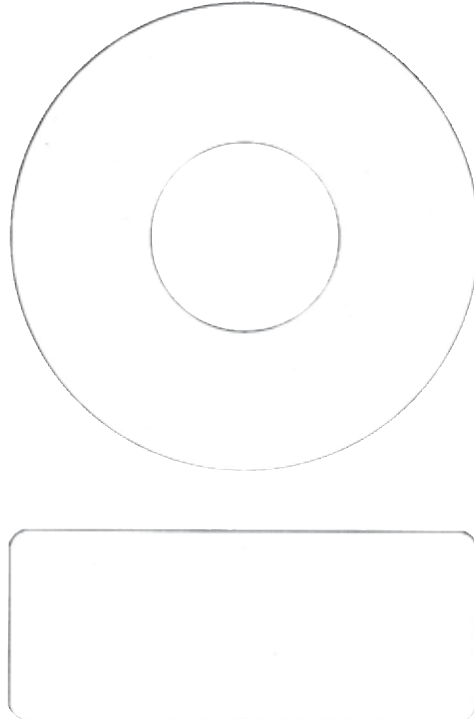
CC



DD



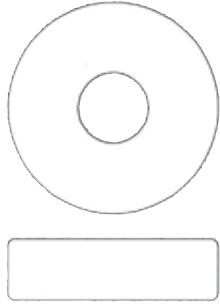
EE



BALL BEARING

PART	SUB-SECTION	QUANTITY
FF 000026874	Ball Bearing	Qty. 1

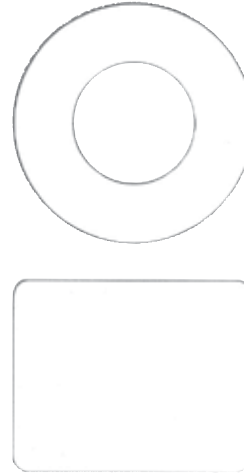
FF



JOGGER ARM

PART	SUB-SECTION	QUANTITY
GG B11450001000	Jogger Arm	Qty. 1

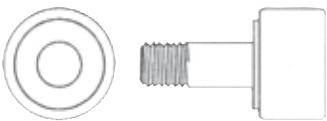
GG



CAM FOLLOWER NEEDLE

PART	SUB-SECTION	QUANTITY
HH B11480001000	Cam Follower Needle	Qty. 1

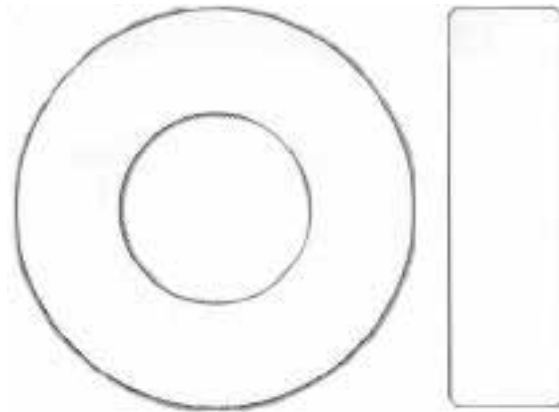
HH



PIN WHEEL GUIDE ROLLER

PART	SUB-SECTION	QUANTITY
II B11430008000	Pin Wheel Guide Roller	Qty. 1

II



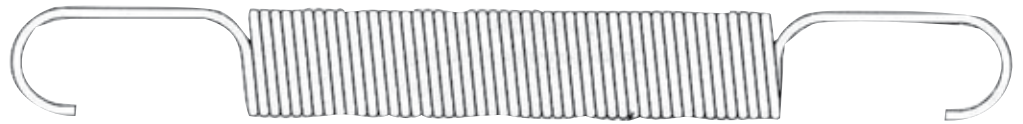
TENSION SPRING

PART	QUANTITY
A B12100107000	Qty. 1
B B12100296000	Qty. 1
C B12102105000	Qty. 1

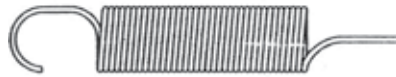
TENSION SPRING - CONTINUED

PART	QUANTITY
D B12150025000	Qty. 1
E B12150070000	Qty. 1
F B12150096000BG	Qty. 2

A



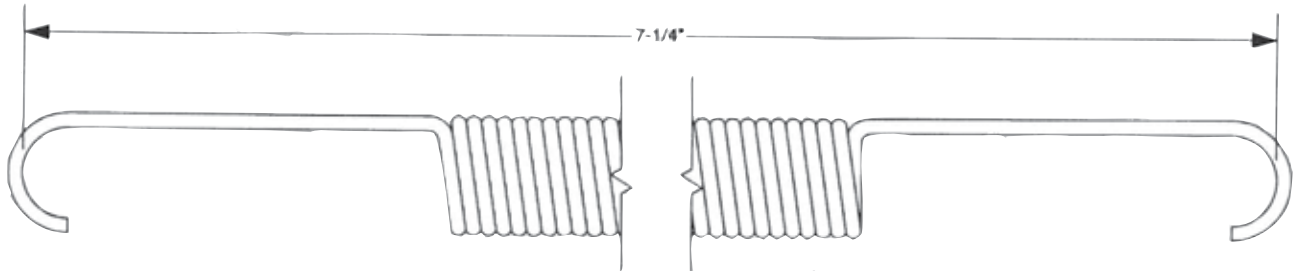
B



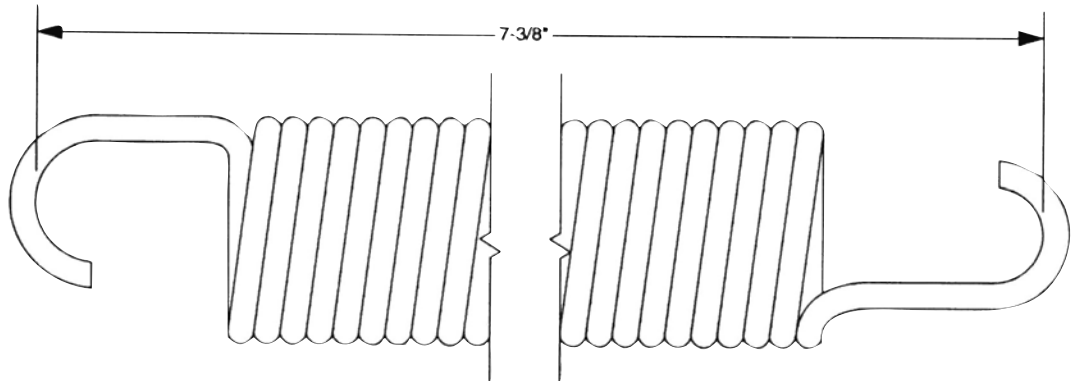
C



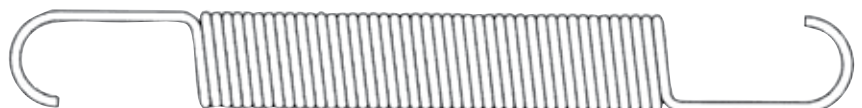
D



E



F



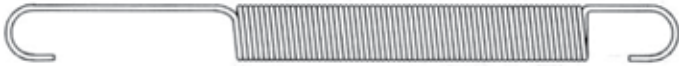
TENSION SPRING - CONTINUED

	PART	QUANTITY
G	B12150132000	Qty. 1
H	B12252330000	Qty. 1
I	B12400194000	Qty. 1

TENSION SPRING - CONTINUED

	PART	QUANTITY
L	B12450051000	Qty. 1
M	B12450061000	Qty. 1
N	B12450079000	Qty. 1

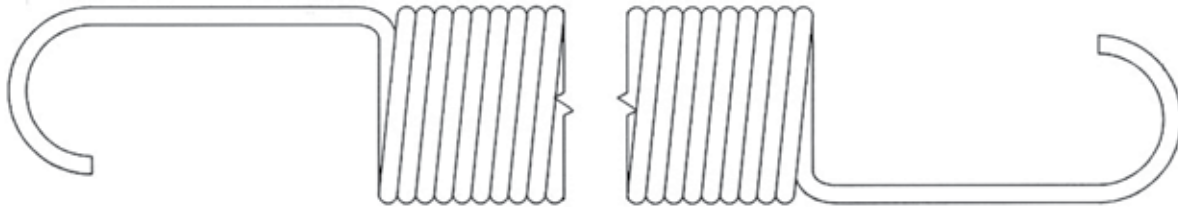
G



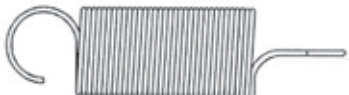
H



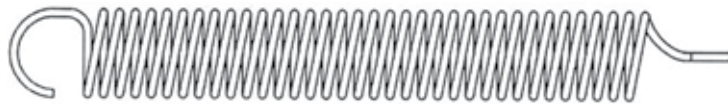
I



L



M

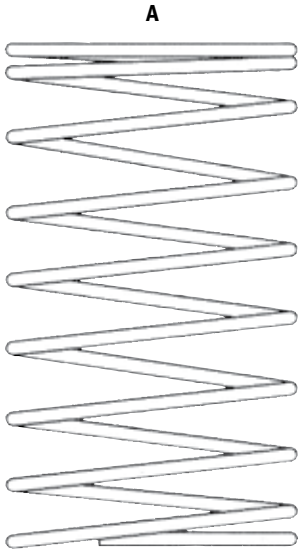


N





PART		QUANTITY
A	B12150087000	Qty. 1
B	B12700041000	Qty. 1







QUBICA  **AMF**

B - 2 PARTS & HARDWARE INDEX

3



B-2 PARTS & HARDWARE INDEX

INDEX LIST	
ITEM #	PAGE #
000024590	64
000026874	65
000026874	68
090008035	32
090008095	32
250001041	67
250001161	6
250001163	6
701000039	67
701013019	67
701019007	67
701021010	67
755503045	32
757003039	32
785502065	64
B10002001000BG	09
B10002006000BG	44
B10009001001BG	46
B10191557000BG	54
B10229451000BG	17
B10229453000	17
B10386062000BG	60
B10386092000BG	61
B10421901000BG	63
B10424001000BG	62
B10430001000	64
B10635112000	34
B10635113000	34
B10635118000	34
B10635124000	34
B10635126000	34
B10635303000	34
B10635304000	34
B10635306000	34
B10635309000	34
B10635315000	34
B10635317000	34
B10635325000	34
B10635326000	34
B10635329000	34
B10635330000	34
B10688003000	17
B10688003003	17
B10690001000	7
B11001060001BG	44
B11001062001BG	44
B11001068001BG	44
B11001070001BG	44
B11001072001BG	44
B11001185001BG	38
B11001186001BG	38
B11001188001BG	38
B11001190001BG	38
B11001192001BG	38
B11001193001BG	38

INDEX LIST	
ITEM #	PAGE #
B11001194001BG	38
B11001195001BG	38
B11001196001BG	38
B11001222001BG	39
B11001258001BG	39
B11001260001BG	39
B11001262001BG	39
B11001263001BG	39
B11001264001BG	39
B11001265001BG	40
B11001266001BG	39
B11001268001BG	39
B11001270001BG	39
B11001272001BG	39
B11001275001BG	39
B11001276001BG	40
B11001278001BG	40
B11001286001BG	40
B11001304001BG	41
B11001342001BG	42
B11001344001BG	42
B11001346001BG	42
B11001347001BG	42
B11001350001BG	42
B11001352001BG	42
B11001353001BG	42
B11001354001BG	42
B11001355001BG	42
B11001357001BG	42
B11001359001BG	42
B11001384001BG	43
B11001390001BG	43
B11001393001BG	43
B11001394001BG	43
B11001423001BG	44
B11001436001BG	44
B11001506001BG	44
B11001508001BG	44
B11002001001BG	38
B11002002001BG	38
B11002004001BG	38
B11002005001BG	38
B11002006001BG	38
B11002007001BG	38
B11002008001BG	38
B11002035001BG	39
B11002068001BG	40
B11002070001BG	40
B11002075001BG	40
B11002092001BG	41
B11002094001BG	41
B11002124001BG	42
B11002125001BG	42
B11002128001BG	42
B11002132001BG	42

INDEX LIST	
ITEM #	PAGE #
B11002155000BG	43
B11002247000BG	44
B11005092001BG	45
B11005093001BG	45
B11005094000BG	45
B11005118001BG	45
B11005120001BG	45
B11005178001BG	45
B11005180001BG	45
B11005182001BG	45
B11005183001BG	45
B11005184001BG	45
B11005194001BG	45
B11005263001BG	45
B11005264001BG	45
B11005266001BG	45
B11005354001BG	46
B11005553001BG	46
B11006088001BG	49
B11006180001BG	49
B11006184001BG	49
B11006218000BG	49
B11006504001BG	49
B11007086001BG	47
B11007090001BG	47
B11007092001BG	47
B11007094000BG	47
B11007180001BG	47
B11007182001BG	47
B11007184001BG	47
B11007186001BG	47
B11007188001BG	47
B11007195001BG	47
B11007200001BG	47
B11007216001BG	47
B11007264001BG	48
B11007267001BG	48
B11007300001BG	48
B11007344001BG	48
B11007346001BG	48
B11007352001BG	48
B11007384001BG	48
B11007386001BG	48
B11007388001BG	48
B11102262001	13
B11106525000	28
B11125000001BG	50
B11125001001BG	50
B11125003001BG	50
B11125004001BG	50
B11125005001BG	50
B11125006001BG	50
B11125007001BG	50
B11125009001BG	50
B11125011001BG	50

INDEX LIST	
ITEM #	PAGE #
B11125100001BG	51
B11125101001BG	51
B11125102001BG	51
B11125103001BG	51
B11125104001BG	51
B11125106001BG	51
B11125107001BG	51
B11125108001BG	51
B11125109001BG	51
B11125115001BG	51
B11125200001BG	50
B11125201001BG	50
B11125204001BG	50
B11125206001BG	50
B11125207001BG	50
B11125208001BG	50
B11125209001BG	50
B11125213001BG	50
B11125250001BG	50
B11125251001BG	50
B11125254001BG	50
B11125257000BG	50
B11125259001BG	50
B11125263001BG	50
B11125265001BG	50
B11131516000	19
B11155401002	23
B11160005001	17
B11170002001BG	51
B11170004001BG	51
B11170005001BG	51
B11170006001BG	51
B11170007001BG	51
B11170008001BG	51
B11170009001BG	51
B11170010001BG	51
B11170011001BG	51
B11170012001BG	51
B11170014001BG	51
B11170015001BG	51
B11170016001BG	51
B11170104001BG	49
B11170106001BG	49
B11170108001BG	49
B11170109001BG	49
B11170110001BG	49
B11190002001BG	55
B11190004001BG	55
B11190006001BG	55
B11190010001BG	55
B11190012001BG	55
B11190014001BG	55
B11190016001BG	55
B11190018001BG	55
B11190022001BG	55

B-2 PARTS & HARDWARE INDEX

INDEX LIST	
ITEM #	PAGE #
B11190509001BG	54
B11190511001BG	54
B11190512001BG	54
B11190514001BG	54
B11190519001BG	54
B11190520001BG	54
B11190521001BG	54
B11190522001BG	54
B11190527001BG	54
B11191014001BG	55
B11191018001BG	55
B11191024001BG	55
B11195004001BG	53
B11195006001BG	53
B11195008001BG	53
B11195010001BG	53
B11195014001BG	53
B11195015001BG	53
B11195016001BG	53
B11195017001BG	53
B11195018001BG	53
B11195020001BG	53
B11196008001BG	53
B11196012001BG	53
B11198002001BG	53
B11198003001BG	53
B11198005001BG	53
B11198007001BG	53
B11198009001BG	53
B11230000001BG	57
B11230001001BG	57
B11230002001BG	57
B11230003001BG	57
B11230005001BG	57
B11345154000BG	56
B11345160001BG	56
B11345161001BG	56
B11345258001BG	56
B11345264000BG	56
B11345302001BG	56
B11345304000BG	56
B11345306000BG	56
B11345312000BG	56
B11345318000BG	56
B11345404000BG	56
B11345406000BG	56
B11345408001BG	56
B11345418001BG	56
B11345420001BG	56
B11345520001BG	56
B11345573000BG	56
B11360257000BG	57
B11360258001BG	57
B11360260000BG	57
B11360264000BG	57

INDEX LIST	
ITEM #	PAGE #
B11360365001BG	57
B11360460000BG	57
B11360465000BG	57
B11360466000BG	57
B11360619000BG	57
B11361315000BG	57
B11387264002	7
B11413001000	64
B11420000000BG	62
B11420007000BG	62
B11420008000BG	62
B11420009000BG	62
B11420015000BG	62
B11420019000BG	62
B11420043000BG	62
B11420054000BG	62
B11420094000BG	62
B11420095000BG	62
B11420097000BG	62
B11420102000BG	62
B11421004000BG	63
B11421008000BG	63
B11421017000BG	63
B11421019000BG	63
B11421041000BG	63
B11421045000BG	63
B11421048000BG	63
B11421053000BG	63
B11421058000BG	63
B11421061000BG	63
B11421065000BG	63
B11421109000BG	63
B11421110000BG	63
B11423000000BG	62
B11430004000	64
B11430007000	64
B11430008000	68
B11430013000	64
B11430016000	65
B11431006000	65
B11431010000	65
B11432000000	65
B11432002000	67
B11433000000	65
B11437000000	65
B11450001000	68
B11450100000	18
B11450200000	18
B11450201000	65
B11450301000	65
B11450303000	66
B11460000000	66
B11461000000	66
B11480001000	68
B11483000000	66

INDEX LIST	
ITEM #	PAGE #
B11483001000	66
B11490001000	66
B11491000000	66
B11500001000	66
B11530012001BG	52
B11530015001BG	52
B11530017001BG	52
B11530019001BG	52
B11530021001BG	52
B11530025001BG	52
B11530027001BG	52
B11530028001BG	52
B11530030001BG	52
B11533512001BG	52
B11536026001BG	52
B11615501000	31
B11625501000BG	18
B11625530000BG	18
B12100025000	20
B12100030002BG	60
B12100030005BG	60
B12100040004	18
B12100066000	18
B12100068000	19
B12100069000BG	19
B12100072000	19
B12100104000	19
B12100107000	69
B12100122000	19
B12100146000	19
B12100146030	19
B12100164000BG	59
B12100166002BG	58
B12100166004BG	58
B12100166005BG	58
B12100166006BG	58
B12100166007BG	58
B12100166008BG	58
B12100166009BG	58
B12100166011BG	58
B12100166013BG	58
B12100166014BG	58
B12100166015BG	58
B12100166016BG	58
B12100166017BG	58
B12100166019BG	58
B12100166022BG	58
B12100166024BG	58
B12100166025BG	58
B12100166026BG	58
B12100166027BG	58
B12100166032BG	58
B12100168002BG	18
B12100168003BG	18
B12100174002	18

INDEX LIST	
ITEM #	PAGE #
B12100178000	20
B12100185003	19
B12100185014BG	19
B12100185020BG	60
B12100185021BG	60
B12100185022BG	60
B12100185023BG	60
B12100185036BG	61
B12100187009BG	59
B12100187011BG	59
B12100207000	19
B12100223000	20
B12100242000	20
B12100257000BG	20
B12100280000	12
B12100296000	69
B12100313000	19
B12100334000BG	62
B12100337000	20
B12100339000BG	20
B12100340000	20
B12100344002BG	20
B12100370000	19
B12100391000BG	20
B12100410000	20
B12100465000	18
B12100477000	20
B12100484000	20
B12100512000	33
B12100828002	21
B12100829000	21
B12100831000	21
B12100896000BG	60
B12102105000	69
B12102176000	21
B12102363000BG	21
B12102754000	21
B12102791000	21
B12102792000	21
B12102794000	21
B121041B	20
B121060	22
B121107BG	19
B12150004000	28
B12150011000	28
B12150023002BG	59
B12150023007BG	58
B12150025000	69
B12150040000	28
B12150051000	28
B12150056002	28
B12150056003	28
B12150057003	8
B12150062000	28
B12150069000	28

B-2 PARTS & HARDWARE INDEX

INDEX LIST	
ITEM #	PAGE #
B12150070000	69
B12150086000	28
B12150087000	71
B12150096000BG	69
B12150108000	28
B12150109000	28
B12150113000	34
B12150113600	34
B12150115000	29
B12150125000BG	60
B12150130005	29
B12150130006	29
B12150132000	70
B12150138000	29
B12150143003	29
B12150157003	29
B12150158006BG	58
B12150158007BG	58
B12150158012BG	58
B12150158013BG	58
B12150158014BG	58
B12150158015BG	58
B12150158016BG	58
B12150158017BG	58
B12150176000	29
B12150190000BG	62
B12150200000	29
B12150213000	31
B12150216000	29
B12150217000	61
B12150219000	29
B12150220000	29
B12150226000	29
B12150227000	29
B12150234000	30
B12150235000	30
B12150253000	31
B12150254000	30
B12150255000BG	63
B12150258000	30
B12150267000BG	61
B12150279000	30
B12150287000	30
B12150289000	30
B12150294000	30
B12150295000	30
B12150296000	30
B12150297000	30
B12150303000	30
B12150306000	29
B121556	8
B12200016000	11
B12200016091	11
B12200017092	11
B12200018000	11

INDEX LIST	
ITEM #	PAGE #
B12200019092	11
B12200031004BG	11
B12200032000BG	13
B12200035000	11
B12200036000	11
B12200039000	11
B12200047003BG	60
B12200047003BG	61
B12200066002	12
B12200066003	12
B12200066004	12
B12200067000	12
B12200069000	12
B12200094000	13
B12200104000BG	63
B12200105000BG	63
B12200120004	11
B12200125000	13
B12200126000	12
B12200129000	12
B12200808002	11
B12200808003	11
B12200874000BX	11
B12200892000	11
B12200893000	11
B12200900000	11
B12250010011BG	58
B12250011002BG	60
B12250011003BG	60
B12250011011BG	60
B12250011012BG	60
B12250011014BG	60
B12250011019BG	60
B12250011020BG	60
B12250011021BG	60
B12250022002	26
B12250040000	26
B12250075000BG	62
B12250076002BG	55
B12250091000BG	62
B12250153000BG	9
B12250183005BG	60
B12250189000BG	9
B12250273000	26
B12250275000	26
B12250278002	26
B12250289000	26
B12250216000BG	8
B12252024004	26
B12252037000	26
B12252048000	26
B12252069000	9
B12252173000	10
B12252268000	10
B12252269000	10

INDEX LIST	
ITEM #	PAGE #
B12252304000	10
B12252309000	26
B12252330000	70
B12252338000	26
B12252344000	9
B12252346000	9
B12252349000BG	60
B12252350000BG	61
B12252351000BG	10
B12252352000BG	9
B12252354000	26
B12252355091	26
B12252356000	27
B12252359000	9
B12252360000BG	55
B12252364002	9
B12252364003	9
B12252373000	27
B12252377000	8
B12252377002	8
B12252377003	8
B12300071000	25
B12300073000	25
B12300075000	24
B12300077000	24
B12300082003	34
B12300103000	24
B12300103E	24
B12300103-V	24
B12300131000	23
B12300141000	23
B12300149000	23
B12300160000	23
B12300160003	23
B12300163000	24
B12300164000	23
B12300168000	23
B12300169000	23
B12300170000	23
B12300172000	23
B12300178000	23
B12300189000	23
B12300192000	24
B12300193000	24
B12300194000	24
B12300207000	24
B12300208000	24
B12300244000	24
B12350032000	12
B12350122000	11
B12350122002	11
B12350122003	11
B12350122004	11
B12350802000	12
B12350803000	12

INDEX LIST	
ITEM #	PAGE #
B12350804000	12
B12400018002BG	61
B12400018004BG	60
B12400018005BG	60
B12400018007BG	61
B12400018008BG	61
B12400018023BG	61
B12400027000	14
B12400034002	34
B12400034003	34
B12400034004	34
B12400034005	34
B12400034007	34
B12400035003	13
B12400035006	13
B12400035008	13
B12400035009	13
B12400048091	15
B12400051000	14
B12400053000	15
B12400055003	17
B12400071000	17
B12400081000	21
B12400126000	14
B12400138002BG	59
B12400138003BG	59
B12400138004BG	59
B12400138006BG	59
B12400138007BG	59
B12400138008BG	59
B12400139003	13
B12400139003	17
B12400139003	15
B12400193000	15
B12400194000	70
B12400199000BG	63
B12400209000	16
B12400219000	16
B12400221000	16
B12400223000	34
B12400227000	34
B12400227000S	34
B12400240000	16
B12400254000	14
B12400256000	16
B12400257000	16
B12400257000	16
B12400261000	16
B12400262000	16
B12400263000	16
B12400265000	17
B12400266000	17
B12400268000	16
B12400269000	16
B12400289000	61
B12400297000	16

B-2 PARTS & HARDWARE INDEX

INDEX LIST	
ITEM #	PAGE #
B12400300000	14
B12400314000	34
B12400329000	34
B12400803000	15
B12400806002	16
B12400806003	16
B12400810000	14
B12400848000	15
B12402042000	15
B12402043000	15
B12402051000	14
B12402081000	21
B12402121000	15
B12402126000	14
B12402422000	14
B12402432000	15
B12450006002BG	59
B12450032000	8
B12450034000	8
B12450037000	34
B12450037000G	34
B12450051000	70
B12450061000	70
B12450064000	8
B12450075000	8
B12450079000	70
B12502100000	7
B12502131000	7
B12502134000	7
B12502139000	7
B12502140000	7
B12502154000	7
B12502303000	7
B12502349600	7
B12502353000	7
B12502410000	21
B12502474000	7
B12502475000	7
B12700041000	71
B12700110000	33
B12700126000BX	33
B12700207000	12
B12700207000	33
B12700268000	33
B12700271000	33
B12750079000	31
B12750180000	32
B12750746002	31
B12752056000	32
B12752056-R	32
B12860171000	22
B12860172000	22
B12860330000	14
B12860330091	14
B12860571000BX	11

INDEX LIST	
ITEM #	PAGE #
B12860576000	27
B12860577000	27
B12860583000	17
B12860603000	21
B12860607000	26
B12860613000	21
B12860620002	25
B12860620003	25
B12860620004	25
B12860620005	25
B12860624000	24
B12860626000	21
B12860628002	22
B12860630000	22
B12860642000-R	14
B12860659000	23
B12860665000	26
B12860667000	32
B12860668000	32
B12860672000	22
B12860716000	22
B12860717000	22
B12860804000	30
B12860805000	30
B12862117-R	12
B12862163000	14
B12862164000	32
B12862167000	10
B12862171000	66
B12862180000	14
B12862186000	27
B12862186006	27
B128623A	16
B128623B	16
B12862578000	9
B12862580000	9
B12862581000	12
B12862823000	16
B12862827000	32
B12862839000	9
B12862859000	22
B12862864002	30
B12862864003	22
B12862864005	21
B12862867000	22
B12862890000	32
B12862919000	24
B12862933000BX	32
B158100	33
B53520060000	6
B53520066000	6
B53520071000	6
B53520235000	34
B53860431000	6
B53860555000	6

INDEX LIST	
ITEM #	PAGE #
B90150182000	31
B90200114000	11
B90200808002	11
B90200808003	11
B90200837000	11
B90200837000	11
B90200900000	11
B90300076000	24
B90300077000	24
B9040004800	15
B90400123000	15
B90400258000	16
B90400260000	16
B90400264000	17
B90400271000	16
B90400272000	16
B90400803000	15
B90400840000	17
B90502153000	7
B90520060600	6
B90520171000	6
B90675000000	24
PPP-PC1K	10
PPP-RRA	10
PPP-RRA-NM	10
SB643024	32
SSTJ	33
V12-100104-5	18

INDEX LIST	
ITEM #	PAGE #



STEVE FEDE

B-2 Parts Specialist



THERE'S MORE THAN ONE WAY TO GET IN TOUCH WITH QubicaAMF.

Making it easy for you to reach QubicaAMF is just as important to us as getting our quality products into your hands.

Contact us via phone, fax, web and e-mail and be served by people whose expertise and helpfulness make it easy for you to do business with QubicaAMF.

- ▼ To order Genuine AMF and B-2 Parts and Supplies, contact your local Genuine AMF or B-2 Distributor
- ▼ To learn more about Genuine AMF and B-2 Parts and Supplies, or to locate a distributor near you, visit www.quibcaamf.com
- ▼ To speak to a live person, call 1-866-460-QAMF (7263)
- ▼ To reach us by fax, dial (804) 730-4464
- ▼ To join in on our interactive Products Forum that provides you with a direct link to discussion among peers worldwide, visit <http://forum.amfproducts.com>
- ▼ Still want to write? Send it to QubicaAMF Worldwide Consumer & Support Products, 8100 AMF Drive, Mechanicsville, VA 23111, USA
- ▼ Please register yourself to our new Tech Support Customer Portal www.customerportal.qubicaamf.com, a dedicated area devoted to supporting you and your business needs.



WORLDWIDE HEADQUARTERS

8100 AMF Drive - Mechanicsville, VA 23111 - USA - Tel. (804) 569-1000 - Fax: (804) 559-8650 - Toll free 1-866-460-QAMF (7263)

EUROPEAN HEADQUARTERS

Via della Croce Coperta, 15 - 40128 Bologna - Italy - Tel.+39 051.4192.611 - Fax +39 051.4192.602

www.qubicaamf.com - info@qubicaamf.com